



TEJON-CASTAC
WATER
DISTRICT



South of Kern River Executive Committee Regular Meeting

Tuesday, February 20, 2024

10:00 a.m. to 12:00 p.m.

Meeting Information Posted:

www.sokrgsp.com

<http://www.aewsd.org> * <http://www.wrmwsd.com>

<http://www.tejoncastacwd.com> * <https://www.arvincsd.com>

In Person: Arvin-Edison Water Storage District Headquarters
20401 E. Bear Mountain Blvd. Arvin, CA 93203

Via Remote (**Microsoft Teams**): <https://www.microsoft.com/microsoft-teams/join-a-meeting>

[Click here to join the meeting](#)

Meeting Number: **289 619 843 830**

Meeting Password: **ko5K35**

Phone: **1.213.437.9052**

Phone Meeting Number (access code): **276 512 496#**

NOTICE: Members of the public interested in participating by teleconference may do so using the call-in information above or by following [this link](#). Please note that this teleconference option is provided as a courtesy and at the participant's own risk. The Committee cannot guarantee that there will be no loss of connectivity or other technological obstacle to full participation through teleconferencing. By participating in this way, participants confirm that they understand this risk and that the Committee is not obliged to delay any portion of the meeting due to such technological obstacles and thus that teleconference participants may be unable to participate.

1. CALL TO ORDER
2. ROLL CALL
3. PLEDGE OF ALLEGIANCE
4. APPROVAL OF THE AGENDA
5. APPROVAL OF JANUARY 16, 2024 MEETING MINUTES
6. PUBLIC COMMENT
7. REPORT ITEMS
 - a. GSP Manager Report (*Muhar*)
 - i. Basin Coordination
 - b. Technical Consultant Report (*EKI*)
 - i. Technical Working Group (TWG) Update
 - ii. Report on January 24, 2024 technical meeting with State Water Resources Control Board (SWRCB) Staff
 - iii. GSP Revision Schedule

- iv. SGMA Monitoring Network performance and sustainable management criteria (SMC) compliance
 - c. Finance Report (*Nicholas*)
 - d. California Aqueduct Subsidence Program (CASP) update (*Nicholas*)
 - e. Management Area updates (*Muhar, Nicholas, Martin, Barraza*)
- 8. ACTION ITEM(S)
 - a. Consider recommendation for South of Kern River GSAs to join Letter of Intent to engage Self-Help Enterprises to assist with Subbasin Well Mitigation Program (*Muhar*)
- 9. CLOSED SESSION
 - a. Potential Litigation (Government Code §54956.9(d)(2), (e)(1); 1 item).
- 10. ADJOURNMENT

**MINUTES OF THE MEETING OF THE
SOUTH OF KERN RIVER EXECUTIVE COMMITTEE
January 16, 2024**

CALL TO ORDER

Director Yurosek called the meeting to order at 10:00 a.m., and determined a quorum was present with attendance by:

Executive Committee Directors

Derek Yurosek – Arvin-Edison Water Storage District (AEWSD; Arvin GSA) (present)
Mark Valpredo – Tejon-Castac Water District (TCWD; Tejon-Castac Water District GSA) (present)
Michael Blaine – Wheeler Ridge-Maricopa Water Storage District (WRMWSD; Wheeler Ridge-Maricopa GSA) (present)
Rafael Gallardo – Arvin Community Services District (ACSD) (present)

District Staff

Jeevan Muhar – AEWSD (present)
Sheridan Nicholas – WRMWSD (present)
Angelica Martin – (TCWD) (remote)
Raul Barazza (ACSD) (present)

PLEDGE OF ALLEGIANCE

APPROVAL OF THE AGENDA

Director Yurosek proposed to add Action Item 8b to the agenda to consider a recommendation that the South of Kern River (SOKR) Groundwater Sustainability Agency (GSA) home boards approve GEI Consultants' Budget Overrun, because there was a need to take immediate action on the item and the need for action came to the attention of the SOKR Executive Committee subsequent to the agenda being posted. Director Blaine moved to approve the agenda as amended. Director Gallardo seconded. The motion passed 4-0-0.

APPROVAL OF DECEMBER 18, 2023 MEETING MINUTES

Director Gallardo moved to approve the December 18, 2023 SOKR Executive Committee meeting minutes. Director Blaine seconded. The motion passed 4-0-0.

PUBLIC COMMENT

There were no public comments.

REPORT ITEMS

GSP Manager Report

Basin Coordination

Mr. Muhar reported on the Subbasin GSAs' efforts to coordinate on tasks related to revising the Groundwater Sustainability Plan(s) (GSPs) to respond to the deficiencies identified in the Department of Water Resources (DWR) Inadequate Determination by spring 2024. Mr. Muhar also identified questions for the Basin Point of Contact to ask DWR regarding the process for amended GSP noticing and re-submittal on the DWR portal.

GSP Structure

Mr. Muhar reported on the ongoing discussions between the Subbasin GSAs on whether to develop a single GSP for the Subbasin or retain the existing multi-GSP structure. This discussion was triggered by deficiencies identified by DWR regarding Subbasin coordination.

Technical Consultant Report

Technical Working Group (TWG) Update

EKI reported on the subbasin-wide technical work undertaken during the prior month to address DWR-identified GSP deficiencies. These efforts included providing the Subbasin GSAs a description of the process for developing the draft Chronic Lowering of Groundwater Levels Sustainable Management Criteria (SMCs), preparing a presentation to SWRCB staff scheduled for January 24, 2023 on the topic of water quality, addressing comments from SWRCB staff in the December 13, 2023 meeting on the topic of land subsidence, and drafting common introduction and plan area chapters for the GSP.

Report on December 19, 2023 State Water Resources Control Board (SWRCB) Meeting

EKI reported on the SGMA update item from the SWRCB Board Meeting on December 19, 2023 where SWRCB staff presented on the ongoing State Intervention Process for "inadequate" basins. Kern Subbasin's probationary hearing date is anticipated to occur in January 2025.

SGMA Monitoring Network performance and SMCs compliance

EKI reported on December groundwater conditions within the SOKR Plan Area compared to the existing Minimum Thresholds (MTs).

Finance Report

Mr. Nicholas reported on finances to date, which are split equally between the SOKR GSAs, except for white lands issues where Tejon-Castac Water District GSA is excluded.

California Aqueduct Subsidence Program (CASP) update

Mr. Nicolas reported that feedback from CASP was presented to SWRCB staff in the December 13, 2023 meeting on land subsidence. SOKR GSAs are still waiting for CASP to provide a letter of support for SOKR's proposed, revised subsidence methodology.

Management Area Updates

Mr. Muhar reported that AEWSO is compiling data and information to include in the Water Year (WY) 2023 Annual Report. AEWSO is actively in negotiations to purchase a 160-acre property to expand its existing spreading facilities. If successful, this project would convert irrigated agricultural land into groundwater recharge basins.

Mr. Nicholas reported that WRMWSD is currently undergoing a public process to develop an allocation policy within the Wheeler Ridge-Maricopa GSA boundaries.

Ms. Martin reported that TCWD is continuing efforts to implement a groundwater recharge project included in the GSP.

Mr. Barazza reported that ACSD has been in discussions with AEWSO regarding involvement in the expansion of AEWSO's spreading facilities.

ACTION ITEMS

Kern Subbasin MT Exceedance Policy. Mr. Muhar presented the proposed MT for Chronic Lowering of Groundwater Exceedance Policy for the Kern County Subbasin. In the event of an individual MT exceedance, this policy would require GSAs to investigate, document, and report exceedance causes and undertake implementation of any appropriate mitigation measures based on the results of the investigation. Following discussion, Director Gallardo made a motion, seconded by Director Blaine, to recommend the MT Exceedance Policy for approval by the SOKR GSA boards. The Motion passed 4-0-0.

GEI Consultants' DMS Budget Overrun. Mr. Muhar reported that GEI Consultants had a budget overrun of approximately \$143,000 related to work efforts for the Subbasin DMS. GEI Consultants first brought this overrun to the attention of the Kern Groundwater Authority, and subsequently to the Subbasin Plan Manager. The Plan Manager then requested the Subbasin GSAs promptly consider a proposal that the Subbasin pay 50% of this overrun, shared equally between the 22 GSAs. Following discussion, Director Valpredo made a motion, seconded by Director Blaine, to recommend that each SOKR GSA board approve for funding its share of the 50% payment of the GEI Budget Overrun, as proposed. The motion passed 4-0-0.

CLOSED SESSION

Conference with Legal Counsel pursuant to Government Code §54956.9(d)(2), (e)(1) (potential litigation; 1 item). There was no action to report out of closed session.

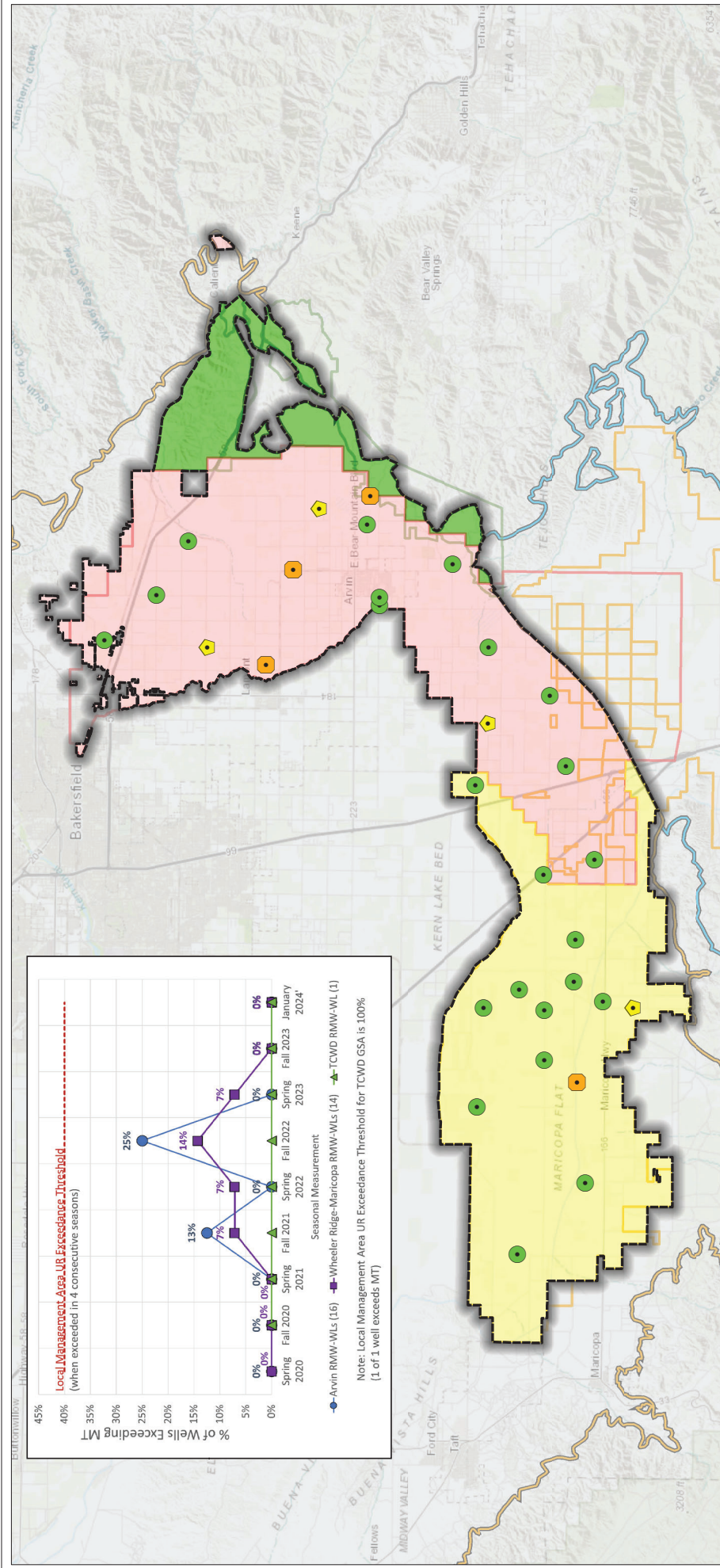
ADJOURNMENT

Director Yurosek adjourned the South of Kern River Executive Committee meeting at 12:05 p.m.

Mark Valpredo, South of Kern River
Executive Committee Secretary

**Kern Subbasin
GSP Chapters Review Schedule**

Chapters/Sections	Draft to TWG	END TWG Review	Draft to Subbasin	END Subbasin Review
¹ Chapters 1 - 4: Purpose, Sustainability Goal, Agency Information, GSP Organization	12/04/23	03/16/24	12/18/23	03/16/24
¹ Chapter 5: Plan Area, Introduce Organizing Themes, Land Use Elements, Communications	02/14/24	02/21/24	02/26/24	03/29/24
Chapters 6 and 7: Basin Setting and Hydrogeological Conceptual Model	02/02/24	02/16/24	02/26/24	03/16/24
Chapter 9: Water Budget - note review dates align with PMA's	03/13/24	03/20/24	03/25/24	03/29/24
Chapter 8, 10: Management Areas	02/19/24	02/26/24	03/04/24	03/13/24
*Chapters 11 - 15: SMCs	02/26/24	03/06/24	03/13/24	03/22/24
*Chapter 16: Monitoring Network	03/06/24	03/13/24	03/20/24	03/25/24
*Chapter 17: PMAs	03/13/24	03/20/24	03/25/24	03/29/24
Chapter 18: Plan Implementation	03/20/24	03/25/24	03/27/24	04/03/24
Executive Summary, revisit Chapters 1-3, 5	---	---	04/29/24	05/03/24
Final Draft		05/03/24		05/10/24
Release Public Draft, Submit to State Board and DWR				
Wednesday, May 15, 2024				



Legend

- Water Level above MT (11 or 68%)
- Water Level between MO and MT but closer to MO (3 or 19%)
- Water Level between MO and MT but closer to MT (2 or 13%)
- South of Kern River Plan Area
- Arvin GSA
- Wheeler Ridge-Maricopa GSA
- Tejon-Castac Water District GSA
- WRMWS District
- AEWSD Service Area
- TCWD Service Area
- Groundwater Subbasin
- Kern County (DWR 5-022.14)
- White Wolf (DWR 5-022.18)

Representative Monitoring Well and Status as of January 2024

- Water Level above MT (11 or 68%)
- Water Level between MO and MT but closer to MO (3 or 19%)
- Water Level between MO and MT but closer to MT (2 or 13%)
- South of Kern River Plan Area
- Arvin GSA
- Wheeler Ridge-Maricopa GSA
- Tejon-Castac Water District GSA
- WRMWS District
- AEWSD Service Area
- TCWD Service Area
- Groundwater Subbasin
- Kern County (DWR 5-022.14)
- White Wolf (DWR 5-022.18)

Abbreviations

- AEWSD = Arvin-Edison Water Storage District
- DWR = California Department of Water Resources
- GSA = Groundwater Sustainability Agency
- MO = Measurable Objective
- MT = Minimum Threshold
- RWW = Representative Monitoring Well
- SGMA = Sustainable Groundwater Management Act
- SMC = Sustainable Management Criteria
- TCWD = Tejon-Castac Water District
- UR = Undesirable Result
- WRMWS District = Wheeler Ridge-Maricopa Water Storage District

Sources

- Basemap is ESRI's ArcGIS Online world topographic map, obtained 7 February 2024.
- GSA boundaries obtained from SGMA GSA Map Viewer portal, accessed 6 May 2022.
- DWR groundwater basins are based on the boundaries defined in California's Groundwater Bulletin 118 - 2019 Update.

Notes

- All locations are approximate.
- Undesirable Results are deemed to occur if groundwater levels in 40% or more RWMs are below their respective MT for four consecutive biannual measurements (Spring and Fall) in any management area.

January 2024 Water Levels Relative to SMCs

South of Kern River GSP
Kern County, CA
January 2024
C20055.00

eki environment & water

INTERIM FIGURE - FOR INFORMATIONAL PURPOSES ONLY

Legend

Representative Monitoring Well and Status as of January 2024

- Water Level above MT (11 or 68%)
- ⬠ Water Level between MO and MT but closer to MO (3 or 19%)
- ⬠ Water Level between MO and MT but closer to MT (2 or 13%)

Sustainability Criteria Zones

- ACSD
- Edison
- North Canal
- South Canal
- Arvin GSA
- Arvin-Edison Water Storage District

Groundwater Subbasin

- Kern County (DWR 5-022.14)
- White Wolf (DWR 5-022.18)

Abbreviations

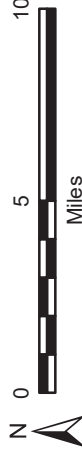
- ACSD = Arvin Community Services District
- DWR = California Department of Water Resources
- ft msl = feet above mean sea level
- GSA = Groundwater Sustainability Agency
- MO = Measurable Objective
- MT = Minimum Threshold
- RMW = Representative Monitoring Well
- SMC = Sustainable Management Criteria

Notes

1. All locations are approximate.
2. Groundwater elevations reported in units of ft msl.
3. All water levels collected during January 2024.
4. Arrow direction indicates water level change from previous month.

Sources

1. Basemap is ESRI's ArcGIS Online world topographic map, obtained 7 February 2024.



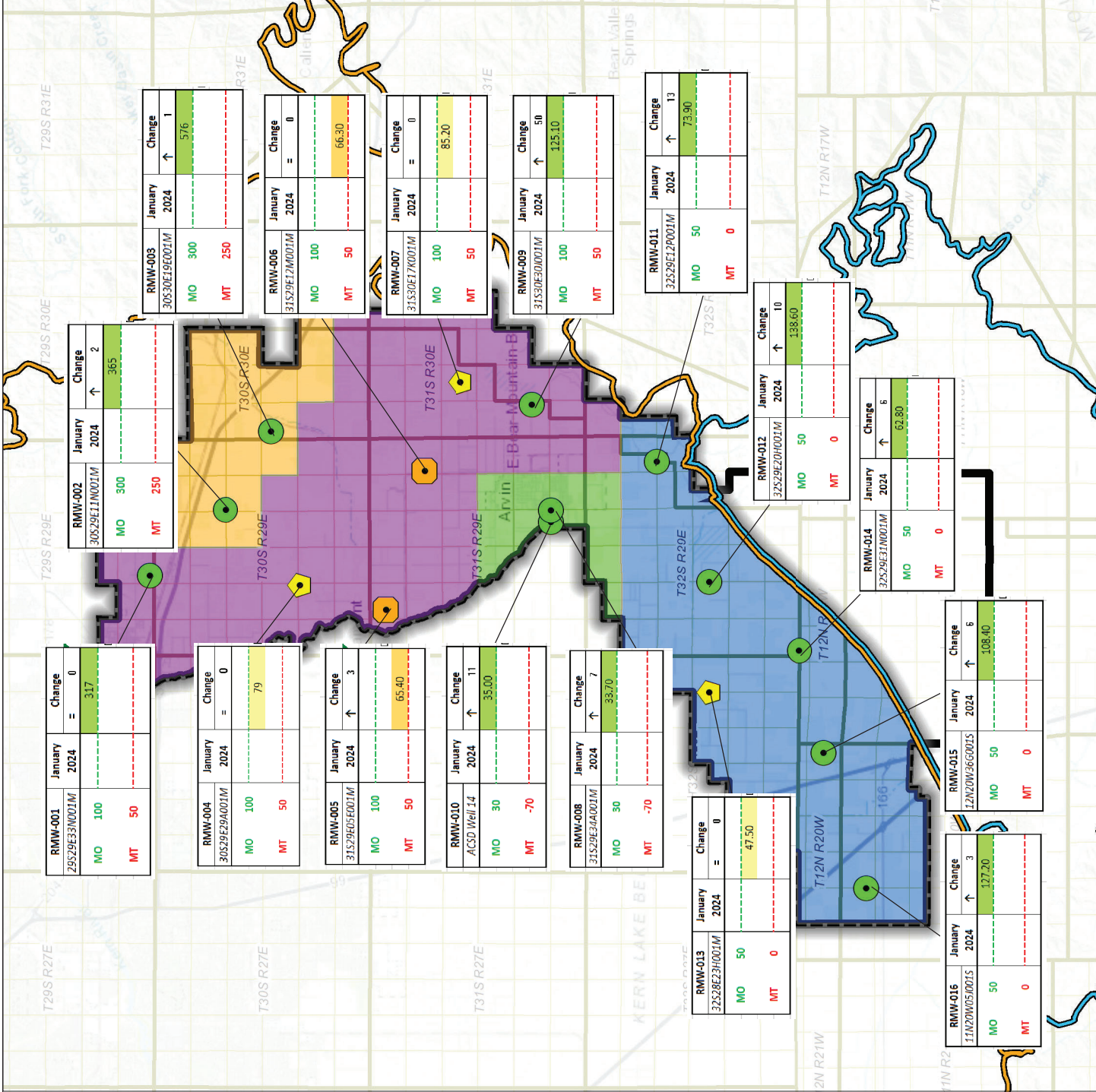
Groundwater Levels Relative to SMCs January 2024

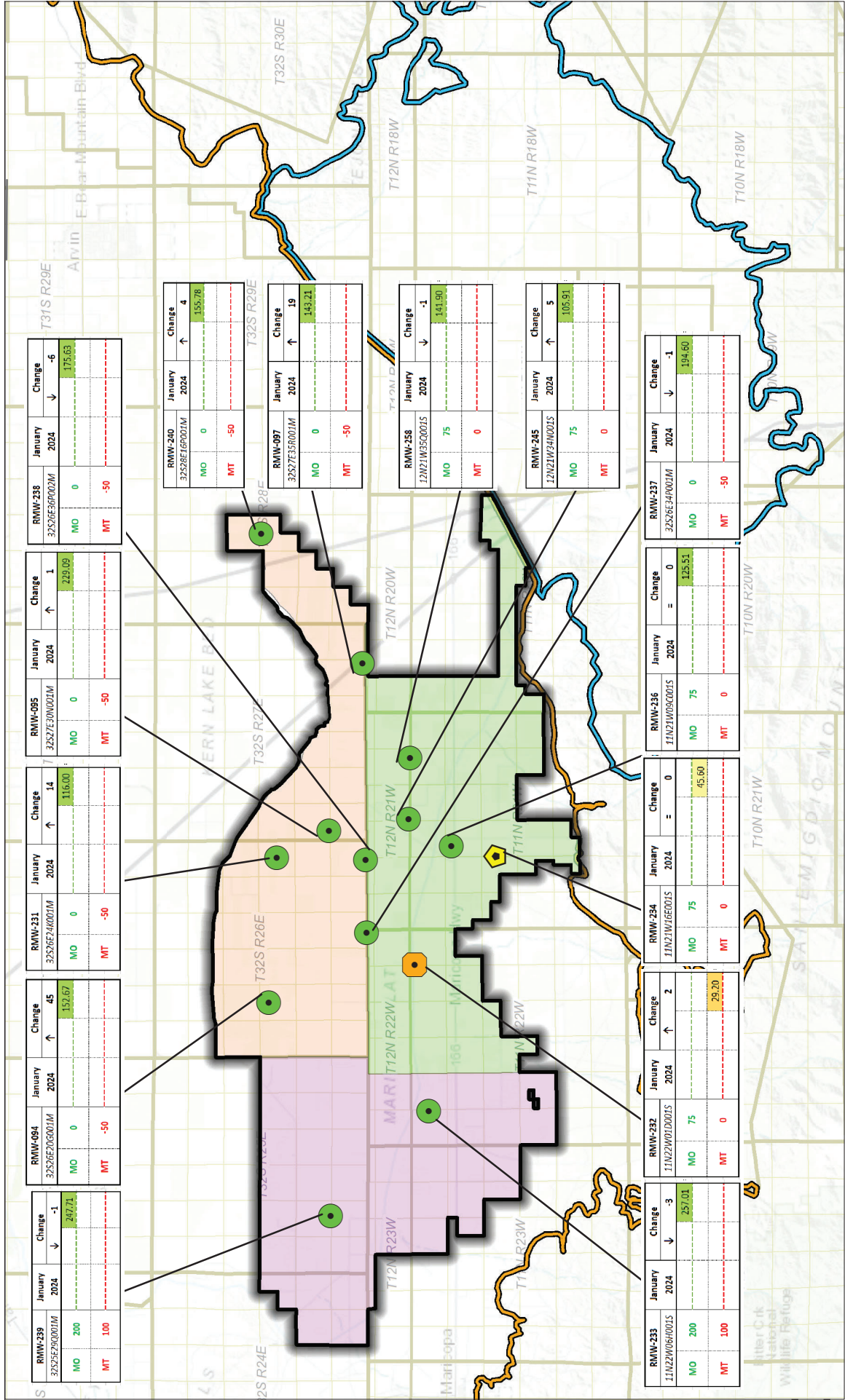
Arvin GSA
Arvin-Edison Water Storage District
Kern County, California
January 2024
B60064.10



Figure 2

INTERIM FIGURE - FOR INFORMATIONAL PURPOSES ONLY





Well ID	MO	MT	January 2024	Change
RMW-238 32S26E4R002M	0	-50	175.63	-6

Well ID	MO	MT	January 2024	Change
RMW-095 32S27E30R002M	0	-50	226.09	1

Well ID	MO	MT	January 2024	Change
RMW-231 32S26E4R001M	0	-50	116.00	14

Well ID	MO	MT	January 2024	Change
RMW-094 32S26E20R001M	0	-50	152.67	45

Well ID	MO	MT	January 2024	Change
RMW-239 32S29R000M	200	100	247.71	-1

Well ID	MO	MT	January 2024	Change
RMW-240 32S28E16R001M	0	-50	155.78	4

Well ID	MO	MT	January 2024	Change
RMW-097 32S27E35R001M	0	-50	144.21	19

Well ID	MO	MT	January 2024	Change
RMW-258 12N21W35R001S	75	0	141.90	-1

Well ID	MO	MT	January 2024	Change
RMW-245 12N21W34R002S	75	0	105.91	5

Well ID	MO	MT	January 2024	Change
RMW-237 32S26E4R003M	0	-50	194.60	-1

Well ID	MO	MT	January 2024	Change
RMW-236 11N21W09R001S	75	0	125.51	0

Well ID	MO	MT	January 2024	Change
RMW-234 11N21W16E001S	75	0	45.60	0

Well ID	MO	MT	January 2024	Change
RMW-232 11N22W01D001S	75	0	25.01	2

Well ID	MO	MT	January 2024	Change
RMW-233 11N22W05R001S	200	100	257.01	-3

Legend

Groundwater Subbasin

- Kern County (DWR 5-022.14)
- White Wolf (DWR 5-022.18)

Sustainability Criteria Zones

- Northeast
- Southeast
- West
- Wheeler Ridge-Maricopa GSA

Notes

- All locations are approximate.
- Groundwater elevations reported in units of ft msl.
- All water levels collected during December 2023.
- Arrow direction indicates water level change from previous month..

Sources

- Basemap is ESRI's ArcGIS Online world topographic map, obtained 7 February 2024.

Representative Monitoring Well and Status as of January 2024

- Water Level Above MO (12 or 86%)
- Water Level Between MO and MT but closer to MO (1 or 7%)
- Water Level Between MO and MT but closer to MT (1 or 7%)

Abbreviations

DWR = California Department of Water Resources

ft msl = feet above mean sea level

GSA = Groundwater Sustainability Agency

MO = Measurable Objective

MT = Minimum Threshold

SMC = Sustainable Management Criteria

Groundwater Levels Relative to SMCs January 2024

Wheeler Ridge-Maricopa GSA

South of Kern River
Kern County, California
January 2024
C20055.00

eki environment & water

Scale in Miles: 0, 4, 8

Figure 3

Legend

Representative Monitoring Well and Status as of January 2024

- Water Level above MT (11 or 69%)
- ▲ Water Level between MO and MT but closer to MO (3 or 19%)
- Water Level between MO and MT but closer to MT (2 or 13%)

District Recovery Well

- AEWSD Spreading Basin
- Arvin GSA
- Arvin-Edison Water Storage District
- Groundwater Subbasin**
- Kern County (DWR 5-022.14)
- White Wolf (DWR 5-022.18)

Abbreviations

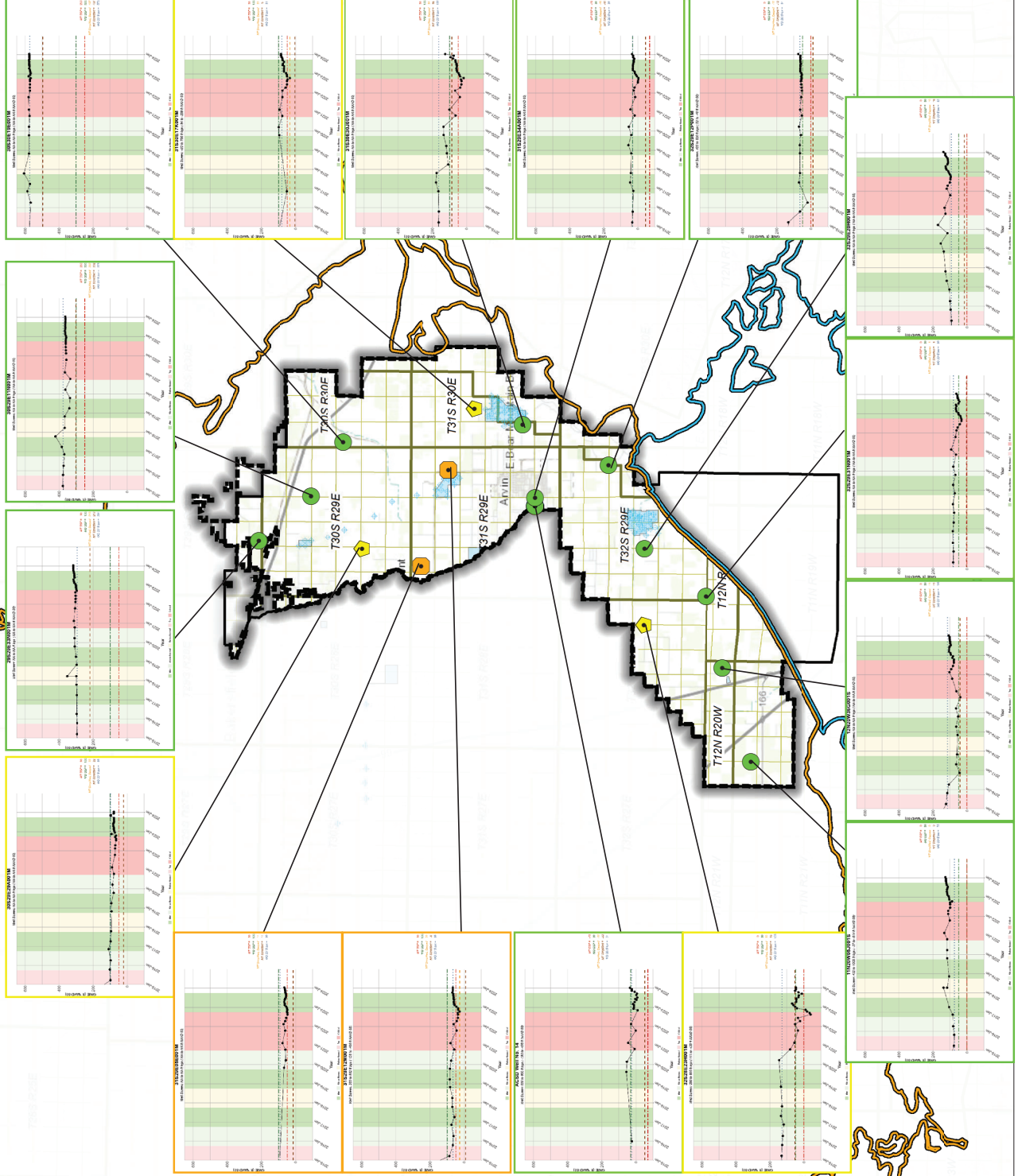
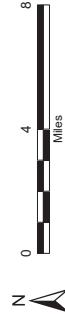
- AEWSD = Arvin-Edison Water Storage District
- DWR = California Department of Water Resources
- ft msl = feet above mean sea level
- GWE = groundwater elevation
- MO = measurable objective
- MT = minimum threshold
- RMW = Representative Monitoring Well

Notes

1. All locations are approximate.
2. Groundwater elevations are in feet mean sea level.
3. Undesirable Results are deemed to occur if groundwater levels in 40% or more (7 or more) RMWs are below their respective MT for 4 consecutive bi-annual measurements (Spring and Fall).
4. All RMW status based on January 2024 measurements.

Sources

1. Basemap is ESRI's ArcGIS Online world topographic map, obtained 6 February 2024.
2. Water level information obtained from AEWSD.



Hydrographs in Representative Monitoring Wells
(Jan 2015 - January 2024)

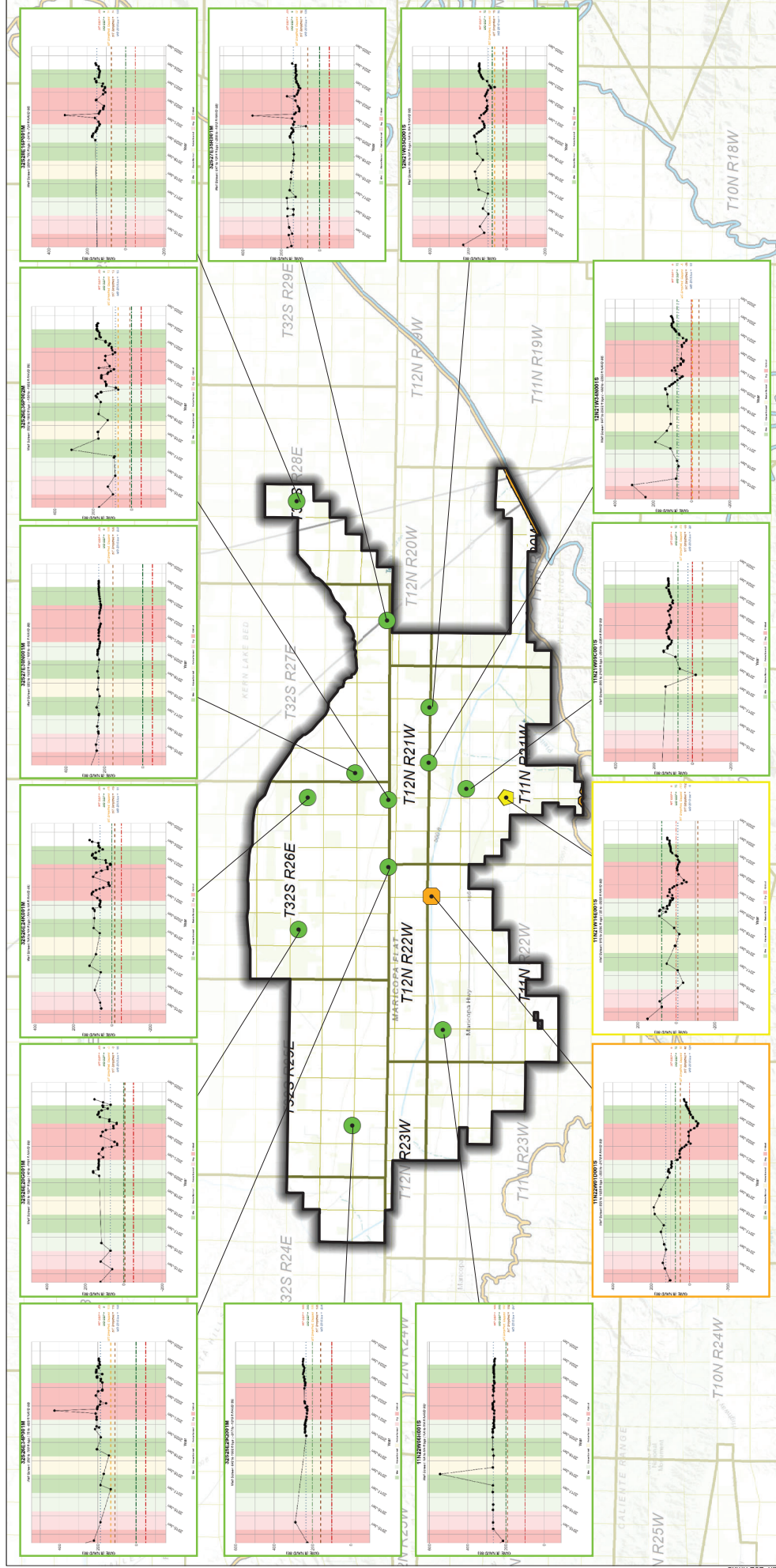
Arvin-Edison Water Storage District
Kern County, CA
January 2024
C20055.01

Figure 4

DRAFT



INTERIM FIGURE - FOR INFORMATIONAL PURPOSES ONLY



Legend

- Water Level Above MO (12 or 66%)
- Water Level Between MO and MT but closer to MT (1 or 7%)
- Water Level Between MO and MT but closer to MO (1 or 7%)
- Wheeler Ridge-Maricopa GSA
- Groundwater Subbasin
- Kern County (DWR 5-022.14)
- White Wolf (DWR 5-022.18)

Notes

- All locations are approximate.
- Groundwater elevations are in feet mean sea level.
- Undesirable Results are deemed to occur if groundwater levels in 40% or more (5 or more) RMWs are below their respective MT for 4 consecutive bi-annual measurements (Spring and Fall).
- All RMW status based on January 2024 measurements.

Abbreviations

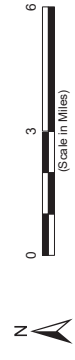
- DWR = California Department of Water Resources
- ft msl = feet above mean sea level
- GSA = Groundwater Sustainability Agency
- MO = Measurable Objective
- MT = Minimum Threshold
- RMW = Representative Monitoring Well
- WRMWS = Wheeler Ridge-Maricopa Water Storage District

Hydrographs in Representative Monitoring Wells (January 2015 - January 2024)

Wheeler Ridge-Maricopa Water Storage District
Kern County, CA
January 2024
B70103.01

Figure 5

INTERIM FIGURE - FOR INFORMATIONAL PURPOSES ONLY



South of Kern River GSA

ACCOUNTS PAYABLE - Shared Expenses

Vendor	Invoice #	Description	Dates	Amount	WRM	Tejon	Arvin
EKI Environment & Water	C20055.00-01	SOKR GSP Development	4/17/2022 - 5/27/2022	77,890.34	25,963.44	25,963.45	25,963.45
EKI Environment & Water	C20055.00-02	SOKR GSP Development	5/28/2022 - 6/24/2022	49,869.56	16,623.18	16,623.19	16,623.19
Kern Groundwater Authority (GEI work)	KG202347	KGS GSP to remove SOKR GSAs	5/28/2022 - 6/24/2022	2,988.63	996.21	996.21	996.21
Kern Groundwater Authority (GEI work)	KG202347	KGS GSP to remove SOKR GSAs	6/25/2022 - 7/29/2022	1,208.83	402.95	402.94	402.94
EKI Environment & Water	C20055.00-03	SOKR GSP Development	6/25/2022 - 7/22/2022	28,090.66	9,363.56	9,363.55	9,363.55
GEI Consultants Inc.	3113531	KGS GSP to remove SOKR GSAs	5/28/2022 - 6/24/2022	2,988.63	996.21	996.21	996.21
EKI Environment & Water	C20055.00-04	SOKR GSP Development	7/23/2022 - 8/19/2022	3,826.68	1,275.56	1,275.56	1,275.56
EKI Environment & Water	C20055.00-05	SOKR GSP Development	8/20/2022 - 9/7/2022	3,320.46	1,106.82	1,106.82	1,106.82
EKI Environment & Water	C20055.01-01	SOKR GSP Implementation/Proj.Mgmt.	9/8/2022 - 9/30/2022	1,827.28	609.10	609.09	609.09
EKI Environment & Water	C20055.01-02	SOKR GSP Implementation/Proj.Mgmt.	10/1/2022 - 10/28/2022	6,092.32	2,030.77	2,030.77	2,030.78
Go Daddy / Visa payment	2311999268	2 year website (sokrgsp.com)	9/13/22 - 9/13/24	443.18	147.73	147.73	147.72
EKI Environment & Water	C20055.01-03	SOKR GSP Implementation/Proj.Mgmt.	10/29/2022 - 11/25/2022	4,974.32	1,658.11	1,658.11	1,658.10
EKI Environment & Water	C20055.01-04	SOKR GSP Implementation/Proj.Mgmt.	11/26/2022 - 12/31/2022	8,378.50	2,792.83	2,792.83	2,792.84
EKI Environment & Water	C20055.01-05	SOKR GSP Implementation/Proj.Mgmt.	1/1/2023 - 1/31/2023	4,076.54	1,358.85	1,358.85	1,358.84
EKI Environment & Water	C20055.02-01	SOKR GSP Implementation/Proj.Mgmt.	2/1/2023 - 2/28/2023	2,200.64	733.54	733.55	733.55
EKI Environment & Water	C20055.02-02	SOKR GSP Implementation/Proj.Mgmt.	3/1/2023 - 3/31/2023	13,351.26	4,450.42	4,450.42	4,450.42
EKI Environment & Water	C20055.02-03	SOKR GSP Implementation/Proj.Mgmt.	4/1/2023 - 4/30/2023	24,656.32	8,218.78	8,218.77	8,218.77
SGMA Coordination Committee	Fund Req. #1	Initial Funding Request (6 GSAs)	4/28/2023	5,000.00	1,666.67	1,666.66	1,666.67
EKI Environment & Water	C20055.02-04	SOKR GSP Implementation/Proj.Mgmt.	5/1/2023 - 5/31/2023	30,590.56	10,196.86	10,196.85	10,196.85
EKI Environment & Water	C20055.02-05	SOKR GSP Implementation/Proj.Mgmt.	6/1/2023 - 6/30/2023	8,882.38	2,960.80	2,960.79	2,960.79
EKI Environment & Water	C20055.02-06	SOKR GSP Implementation/Proj.Mgmt.	7/1/2023 - 7/31/2023	4,676.88	1,558.96	1,558.96	1,558.96
EKI Environment & Water	C20055.03-01	SOKR GSP Response to Deficiencies	6/1/2023 - 6/30/2023	27,943.24	9,314.42	9,314.41	9,314.41
EKI Environment & Water	C20055.03-02	SOKR GSP Response to Deficiencies	7/1/2023 - 7/31/2023	31,732.48	10,577.50	10,577.49	10,577.49
SGMA Coordination Committee	Fund Req. #2	2nd Funding Request (6 GSAs)	7/31/2023	4,666.67	1,555.55	1,555.56	1,555.56
GEI Consultants Inc.	3113531	Refund of Duplicate Payment	5/28/2022 - 6/24/2022	(2,988.63)	(996.21)	(996.21)	(996.21)
SGMA Coordination Committee	Fund Req. #3	3rd Funding Request (8 GSAs) revised	9/13/2023	4,786.41	1,595.47	1,595.47	1,595.47
EKI Environment & Water	C20055.02-07	SOKR GSP Implementation/Proj.Mgmt.	8/1/2023 - 8/31/2023	12,315.68	4,105.23	4,105.23	4,105.22
Go Daddy / Visa payment	2721316350	1 year email renewal (info@sokrgsp.com)	2023 - 2024	71.88	23.96	23.96	23.96
EKI Environment & Water	C20055.02-08	SOKR GSP Implementation/Proj.Mgmt.	9/1/2023 - 9/30/2023	10,407.28	3,469.10	3,469.09	3,469.09
EKI Environment & Water	C20055.03-03	SOKR GSP Response to Deficiencies	8/1/2023 - 8/31/2023	16,028.22	5,342.74	5,342.74	5,342.74
EKI Environment & Water	C20055.03-04	SOKR GSP Response to Deficiencies	9/1/2023 - 9/30/2023	20,926.10	6,975.36	6,975.37	6,975.37

SGMA Coordination Committee	Fund Req. #4	4th Funding Request (14 GSAs)	12/1/2023	88,636.36	29,545.46	29,545.45	29,545.45
EKI Environment & Water	C20055.02-09	SOKR GSP Implementation/Proj.Mgmt.	10/1/2023 - 10/31/2023	13,967.72	4,655.90	4,655.91	4,655.91
EKI Environment & Water	C20055.02-10	SOKR GSP Implementation/Proj.Mgmt.	11/1/2023 - 11/30/2023	15,589.08	5,196.36	5,196.36	5,196.36
EKI Environment & Water	C20055.02-11	SOKR GSP Implementation/Proj.Mgmt.	12/1/2023 - 12/31/2023	10,261.68	3,420.56	3,420.56	3,420.56
SGMA Coordination Committee	Fund Req. #5	5th Funding Request (14 GSAs)	11/15/2024	53,181.82	17,727.28	17,727.27	17,727.27
Go Daddy / Visa payment	2868262946	Websites+Marketing Basic-1 yr renewal	12/30/2023	155.88	51.96	51.96	51.96
SGMA Coordination Committee	Fund Req. #6	6th Funding Request (14 GSAs)	50% Rincon Contract	8,085.89	2,695.30	2,695.29	2,695.30
SGMA Coordination Committee	Fund Req. #7	7th Funding Request (14 GSAs)	50% GEI DPMS Contract	3,150.00	1,050.00	1,050.00	1,050.00
SGMA Coordination Committee	Fund Req. #8	8th Funding Request (14 GSAs)	Todd Report-Total Contract	9,805.90	3,268.64	3,268.63	3,268.63
TOTALS				614,057.63	204,685.93	204,685.85	204,685.85

ACCOUNTS PAYABLE - Submitted to SGMA Coordination Committee

EKI Environment & Water	C20055.03-05	SOKR GSP Response to Deficiencies	10/1/2023 - 10/31/2023	21,646.56	Invoice to SGMA Coordination Committee
EKI Environment & Water	C20055.03-06	SOKR GSP Response to Deficiencies	11/1/2023 - 11/30/2023	21,026.98	Invoice to SGMA Coordination Committee
EKI Environment & Water	C20055.03-07	SOKR GSP Response to Deficiencies	12/1/2023 - 12/31/2023	26,842.14	Invoice to SGMA Coordination Committee
TOTALS				69,515.68	

ACCOUNTS PAYABLE - Legal Expenses

<u>Vendor</u>	<u>Invoice #</u>	<u>Description</u>	<u>Dates</u>	<u>Amount</u>	<u>WRM</u>	<u>Tejon</u>	<u>Arvin</u>
Arvin-Edison Water Storage District	22-12	SOKR GSP Dev + White Lands	3/1/2022 - 7/6/2022	24,159.00	9,056.00	6,047.00	9,056.00
Arvin-Edison Water Storage District	22-18	SOKR GSP Dev + White Lands	7/1/2022 - 8/31/2022	9,046.01	3,574.17	1,897.67	3,574.17
Arvin-Edison Water Storage District	22-25	SOKR GSP Dev	9/1/2022 - 10/31/2022	2,448.51	816.17	816.17	816.17
Arvin-Edison Water Storage District	22-31	SOKR GSP Dev	11/1/2022 - 12/31/2022	4,926.51	1,642.17	1,642.17	1,642.17
Arvin-Edison Water Storage District	23-06	SOKR GSP Dev	1/1/2023 - 2/28/2023	1,945.26	648.42	648.42	648.42
Arvin-Edison Water Storage District	23-10	SOKR GSP Dev	3/1/2023 - 4/30/2023	7,876.50	2,625.50	2,625.50	2,625.50
Arvin-Edison Water Storage District	23-20	SOKR GSP Dev	5/1/2023 - 6/30/2023	5,428.00	1,809.33	1,809.33	1,809.34
Arvin-Edison Water Storage District	23-24	SOKR GSP Dev	7/1/2023 - 8/31/2023	2,537.00	845.67	845.67	845.66
Arvin-Edison Water Storage District	23-30	SOKR GSP Dev	9/1/2023 - 10/31/2023	9,469.50	3,156.50	3,156.50	3,156.50
Arvin-Edison Water Storage District	23-42	SOKR GSP Dev	11/1/2023 - 12/31/2023	6,785.00	2,261.67	2,261.67	2,261.66
TOTALS				74,621.29	26,435.60	21,750.10	26,435.59



A Nonprofit Housing and Community Development Organization

1. What is SHE's current role in responding to individual households who rely on private wells and have lost access to water?

SHE provides the following services for domestic well users that have lost access to water:

- Emergency Bottled Water – Upon notice that a domestic well user has lost access to water, SHE distributes 2 weeks' worth of bottled drinking water to the household within 24 hours.
- Well Assessment – SHE staff conducts an on-site assessment which includes review of well reports/documentation, confirming water source, checking for running water/water pressure, assessing well depth and water level, inspecting electrical and above-ground components, inspecting any existing tank systems, identifying locations for new tank system placement, and developing a site map.
- Temporary Tanks and Hauled Water – If necessary, SHE arranges for installation of a tank system and routine delivery of hauled potable water to the site. Repair and maintenance services are provided to the system until removal.
- Ongoing Bottled Water – SHE coordinates deliveries of ongoing bottled drinking water until a long-term solution is in place.
- Long-Term Solutions – SHE finances well repairs, well replacement, and service connections to nearby water systems (whenever feasible) to restore long-term water access to the home.
- Water Quality – SHE staff collect water samples which are analyzed by an accredited laboratory. If contaminants exceed the primary Maximum Contaminant Level, SHE arranges for mitigation through disinfection, Point-of-Entry and/or Point-of-Use treatment. A 3-year maintenance plan for any installed filtration devices is provided, and SHE conducts post-install water analysis to confirm mitigation.
- Long-Term Sustainability – After completion of a permanent solution, households may opt-in for a groundwater level monitoring device. SHE installs and maintains the monitoring device and counsels the household on understanding their water usage and the readings of the device. Education on domestic well stewardship is provided to all recipients of long-term solution funding. Topics include conservation, water quality and risks, well operation and maintenance, and emergency preparedness for future needs.

2. Who funds these activities and how is the relationship structured?

Primarily, through formal funding agreements between SHE and CA State Water Resources Control Board (SWRCB) Division of Financial Assistance, Safe and Affordable Fund for Equity and Resilience (SAFER) funds. Additionally, SHE receives funding and



A Nonprofit Housing and Community Development Organization

donations from other partners, including a modest amount of federal funds from USDA Rural Development that can be used to supplement state resources.

3. What are the eligibility requirements?

a. Emergency Bottled Water Deliveries

- Immediate loss of access to water

b. Tanks and Hauled Water

- i. Proof of ownership for owner-occupied households/ proof of occupancy for tenant-occupied households.
- ii. Documentation of a dry, or failing, water well characterized as less than fifty (50) feet of water remaining. Access Authorization/ Right of Entry is required.
- iii. Income self-certification

Income Range		Eligibility Term	Cause of Services
≤ 150% Statewide Median Income	≤ \$126,146	Up to 24 Months*	Dry Well
≥ 150% Statewide Median Income	≥ \$126,146	Up to 12 Months	Dry Well

c. Bottled Water

- i. Proof of ownership for owner-occupied households/ proof of occupancy for tenant-occupied households.
- ii. Documentation of a dry, or failing, water well characterized as less than fifty (50) feet of water remaining OR documentation of a contaminated water well.

Income self-certification

Income Range		Eligibility Term	Cause of Services
≤ 80% Statewide Median Income	≤ \$67,278	Until contamination is mitigated	Contamination
≤ 150% Statewide Median Income	≤ \$126,146	Up to 24 Months†	Dry Well
≥ 150% Statewide Median Income	≥ \$126,146	Up to 12 Months	Dry Well

d. Water Well Repair, Replacement or Connection

- i. Proof of ownership (tenant-occupants are eligible - owner must apply)
- ii. Verification of dry or failing water supply well
- iii. Income self-certification: eligibility ≤ 80% Statewide MHI, less than 200% of federal poverty level, OR participation in another low-income program
- iv. Access Authorization/ Right of Entry to the property

e. Water Quality

- i. Proof of ownership for owner-occupied households or proof of occupancy for tenant-occupied households.



A Nonprofit Housing and Community Development Organization

- ii. Income self-certification: eligibility \leq 80% Statewide MHI, less than 200% of federal poverty level, OR participation in another low-income program
- iii. Access Authorization/Right of Entry to the property
- f. Ground Water Level Monitoring & Private Well Owners Education Program
 - i. Participants in the Water Well Repair, Replacement, and Connections Program are all eligible

4. What are the current costs for the above Programs?

This depends largely on the level of services provided. The average cost for full water well replacement is approximately \$60,000 (including abandonment of former well). The average cost for a temporary tank and hauled water is \$3,000 per month. Currently, all services described are paid for through state contracts and not borne by owners.

5. How do emergency water activities relate to Sustainable Groundwater Management Act (SGMA) implementation?

Many Groundwater Sustainability Agencies (GSAs) are finalizing or beginning to implement plans to address domestic well failures in their groundwater sub-basins. The overlap of SHE's existing emergency water programs can vary depending upon GSA plans. Currently, SHE provides services to all eligible households within over-drafted sub-basins in its service area, which may fall within or overlap with the boundaries of GSA well mitigation plans.

6. Does SHE play any role with GSPs and SGMA implementation?

SHE's SGMA role is advisory in nature. A separate staff team utilizes Department of Water Resources (DWR) funding to provide input and recommendations on GSA Groundwater Sustainability Plans (GSPs).

SHE works alongside residents in disadvantaged rural communities to foster access to safe, affordable, and reliable drinking water. Given SHE's history of building effective long-term relationships and partnerships with a diverse set of agencies, communities, and organizations, SHE sees its role as limited to comments and recommendations on GSP mitigation efforts, proposed or existing legislation or regulations, and evolving best practices. We believe a genuinely inclusive and equitable process is essential to achieve the goal of sustainable water management practices in the San Joaquin Valley.

In addition, a handful of SHE staff fill roles on various GSA Boards and Advisory Committees, either through their employment with SHE or in a separate capacity.

7. Is SHE associated with advocacy groups who challenge GSA plans or activities?

SHE has a long history of collaboration with a diverse set of stakeholders and agencies, including environmental justice organizations. SHE values and fosters long-term



A Nonprofit Housing and Community Development Organization

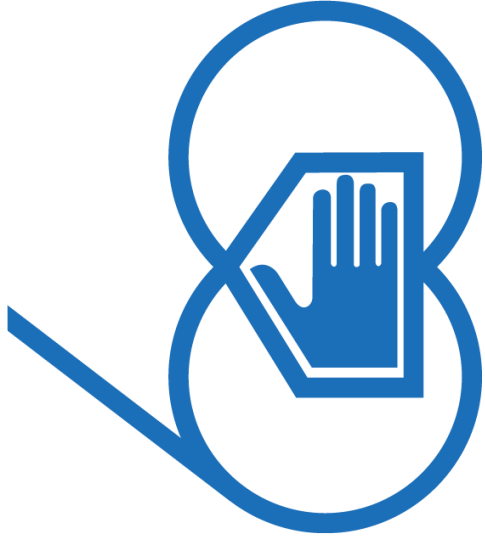
relationships with organizations that share our interest in the communities we serve. Although the tactics and methods of other organizations may vary from our approach to the work, we value diversity of opinion and rigorous analysis of issues.

8. Will SHE be available to assist GSAs with implementation of well mitigation activities?

SGMA implementation and its regulatory framework is evolving in real time, and therefore it is premature to determine future roles with any certainty. SHE hopes to continue to provide services to households impacted by groundwater scarcity but has no specific plans beyond its current contract deliverables. There are no prohibitions for SHE to contract with GSAs for services that we are aware of - in fact we contract with numerous public entities around the Valley for a variety of services.

* For households \leq 150% MHI, the 24-month term may be extended with SWRCB approval, if the household has qualified for loan or grant assistance for a long-term solution, and that process is still underway.

† For households \leq 150% MHI, the 24-month term may be extended with SWRCB approval, if the household has qualified for loan or grant assistance for a long-term solution, and that process is still underway.



Y E A R S

Self-Help Enterprises

DOMESTIC WELL MITIGATION



Emergency Services

Scope of Work



Outreach &
Engagement



Interim Tanks
& Hauled
Water



Interim
Bottled Water



Water Well
Repair,
Replacement,
& Connections



Water Quality
Testing and
Filtration



Education &
Resiliency



Kern County Subbasin

Domestic Well Impacts

GSA	New Wells Constructed	Receiving Interim Services
Kern Groundwater Authority GSA	0	12
Kern River GSA	3	5
Rosedale-Rio Bravo Water Storage District GSA	3	2
Semitropic Water Storage GSA	1	1
Shafter-Wasco Irrigation District GSA	3	5
Southern San Joaquin Municipal Utility District GSA	2	1
Kern Subbasin Total:	12	26

Partnership Potential

- Technical Assistance
- Review and Evaluate Claims
- Well Mitigation Program Administration

