



TEJON-CASTAC
WATER
DISTRICT



South of Kern River Executive Committee Regular Meeting

Tuesday, January 16, 2024

10:00 a.m. to 11:30 a.m.

Meeting Information Posted:

www.sokrgsp.com

<http://www.aewsd.org> * <http://www.wrmwsd.com>

<http://www.tejoncastacwd.com> * <https://www.arvincsd.com>

In Person: Arvin-Edison Water Storage District Headquarters
20401 E. Bear Mountain Blvd. Arvin, CA 93203

Via Remote (**Microsoft Teams**): <https://www.microsoft.com/microsoft-teams/join-a-meeting>

Click here to join the meeting

Meeting Number: **289 619 843 830**

Meeting Password: **ko5K35**

Phone: **1.213.437.9052**

Phone Meeting Number (access code): **276 512 496#**

NOTICE: Members of the public interested in participating by teleconference may do so using the call-in information above or by following [this link](#). Please note that this teleconference option is provided as a courtesy and at the participant's own risk. The Committee cannot guarantee that there will be no loss of connectivity or other technological obstacle to full participation through teleconferencing. By participating in this way, participants confirm that they understand this risk and that the Committee is not obliged to delay any portion of the meeting due to such technological obstacles and thus that teleconference participants may be unable to participate.

1. CALL TO ORDER
2. ROLL CALL
3. PLEDGE OF ALLEGIANCE
4. APPROVAL OF THE AGENDA
5. APPROVAL OF DECEMBER 18, 2023 MEETING MINUTES
6. PUBLIC COMMENT
7. REPORT ITEMS
 - a. GSP Manager Report (*Muhar*)
 - i. Basin Coordination
 - ii. GSP Structure
 - b. Technical Consultant Report (*EKI*)
 - i. Technical Working Group (TWG) Update
 - ii. Report on December 19, 2023 State Water Resources Control Board (SWRCB) Meeting

iii. SGMA Monitoring Network performance and sustainable management criteria (SMC) compliance

c. Finance Report (*Nicholas*)

d. California Aqueduct Subsidence Program (CASP) update (*Nicholas*)

e. Management Area updates (*Muhar, Nicholas, Martin, Barraza*)

8. ACTION ITEM(S)

a. Discussion and potential action to recommend the Kern Subbasin Minimum Threshold (MT) Exceedance Policy for approval by the GSA Boards (*Muhar*)

9. CLOSED SESSION

a. Potential Litigation (Government Code §54956.9(d)(2), (e)(1); 1 item).

10. ADJOURNMENT

**MINUTES OF THE MEETING OF THE
SOUTH OF KERN RIVER EXECUTIVE COMMITTEE
December 18, 2023**

CALL TO ORDER

Director Yurosek called the meeting to order at 10:00 a.m., and determined a quorum was present with attendance by:

Executive Committee Directors

Derek Yurosek – Arvin-Edison Water Storage District (AEWSD; Arvin GSA) (present)
Mark Valpredo – Tejon-Castac Water District (TCWD; Tejon-Castac GSA) (present; arrived at 10:12 a.m.)
Michael Blaine – Wheeler Ridge-Maricopa Water Storage District (WRMWSD; Wheeler Ridge-Maricopa GSA) (present)
Rafael Gallardo – Arvin Community Services District (ACSD) (present)

District Staff

Jeevan Muhar – AEWSD (present)
Sheridan Nicholas – WRMWSD (remote)
Angelica Martin – (TCWD) (remote)
Raul Barazza (ACSD) (present)

PLEDGE OF ALLEGIANCE

APPROVAL OF THE AGENDA

Director Blaine moved to approve the agenda. Director Gallardo seconded. The motion passed 3-0-0 (Director Valpredo absent).

APPROVAL OF NOVEMBER 21, 2023 MEETING MINUTES

Director Gallardo moved to approve the November 21, 2023 South of Kern River (SOKR) Executive Committee meeting minutes. Director Yurosek seconded. The motion passed 3-0-0 (Director Valpredo absent).

PUBLIC COMMENT

There were no public comments.

REPORT ITEMS

GSP Manager Report

Basin Coordination

Mr. Muhar reported that the Subbasin GSAs efforts to coordinate on tasks related to revising the Groundwater Sustainability Plan(s) to respond to the deficiencies identified in the Department of Water Resources (DWR) Inadequate Determination by spring 2024.

Technical Consultant Report

Technical Working Group (TWG) Update

EKI reported on the subbasin-wide technical work undertaken during the prior month to address DWR-identified GSP deficiencies, including information presented in the 13 December 2023 meeting with the SWRCB technical staff on the topic of land subsidence. EKI also provided updates regarding development of Sustainable Management Criteria (SMCs) for Degraded Water Quality, GSP drafting tasks, and its development of documentation for the Chronic Lowering of Groundwater Level SMCs methodology and approach.

SGMA Monitoring Network performance and SMCs compliance

EKI reported on November groundwater conditions within the SOKR Plan Area compared to the existing Minimum Thresholds (MTs).

Finance Report

Mr. Nicholas reported on finances to date, which are split equally between the SOKR GSAs, except for white lands issues where TCWD is excluded. WRMWSD will continue to be billed and AEWSD and TCWD will reimburse WRMWSD.

EKI is tracking Subbasin-wide work efforts (i.e., work efforts not specific to SOKR) under a separate task order, which are billed to WRMWSD. WRMWSD bills and is reimbursed by Buena Vista Water Storage District (BVWSD) GSA, which acts as the Subbasin fiscal agent and splits costs among the 22 participants of the Subbasin cost-sharing agreement.

California Aqueduct Subsidence Program (CASP) update

Mr. Nicolas had no reported updates regarding CASP.

Management Area Updates

Mr. Muhar reported that the AEWSD Board discussed a preliminary 2024 budget that includes financial support for AEWSD's SGMA-related projects. AEWSD's 2024 budget will be considered for approval in January 2024.

Mr. Nicholas reported no updated from last month.

Ms. Martin reported no updates from last month.

ACTION ITEMS

EKI Task Order. EKI presented a task order to continue supporting SOKR GSP implementation through June 2024. Following discussion, Director Valpredo made a

motion, seconded by Director Gallardo, to endorse and recommend the SOKR GSA boards approve funding EKI's task order. The motion passed 4-0-0.

Rincon Consultants, Inc.'s Contract Agreement. Mr. Muhar presented Rincon Consultant's task order to act as the Subbasin Plan Manager through June 2024. Costs would be split equally between the 22 districts, as outlined in the Subbasin cost-sharing agreement. Following discussion, Director Blaine made a motion, seconded by Director Valpredo, to recommend Rincon Consultant's task order for approval by the SOKR GSA boards. The motion passed 4-0-0.

Todd Groundwater's Proposal. Mr. Muhar presented Todd Groundwater's task order to prepare the Subbasin's WY 2024 Annual Report. Costs would be split equally between the 22 districts, as outlined in the Subbasin cost-sharing agreement. Director Yurosek made a motion, seconded by Director Valpredo, to recommend Todd Groundwater's task order for approval by the SOKR GSA boards. The motion passed 4-0-0.

GEI Consultants' Task Order. By agreement of the Directors, this item was moved to follow closed session to accommodate counsel's schedule.

CLOSED SESSION

Conference with Legal Counsel pursuant to Government Code §54956.9(d)(2), (e)(1) (potential litigation; 1 item). There was no action to report out of closed session.

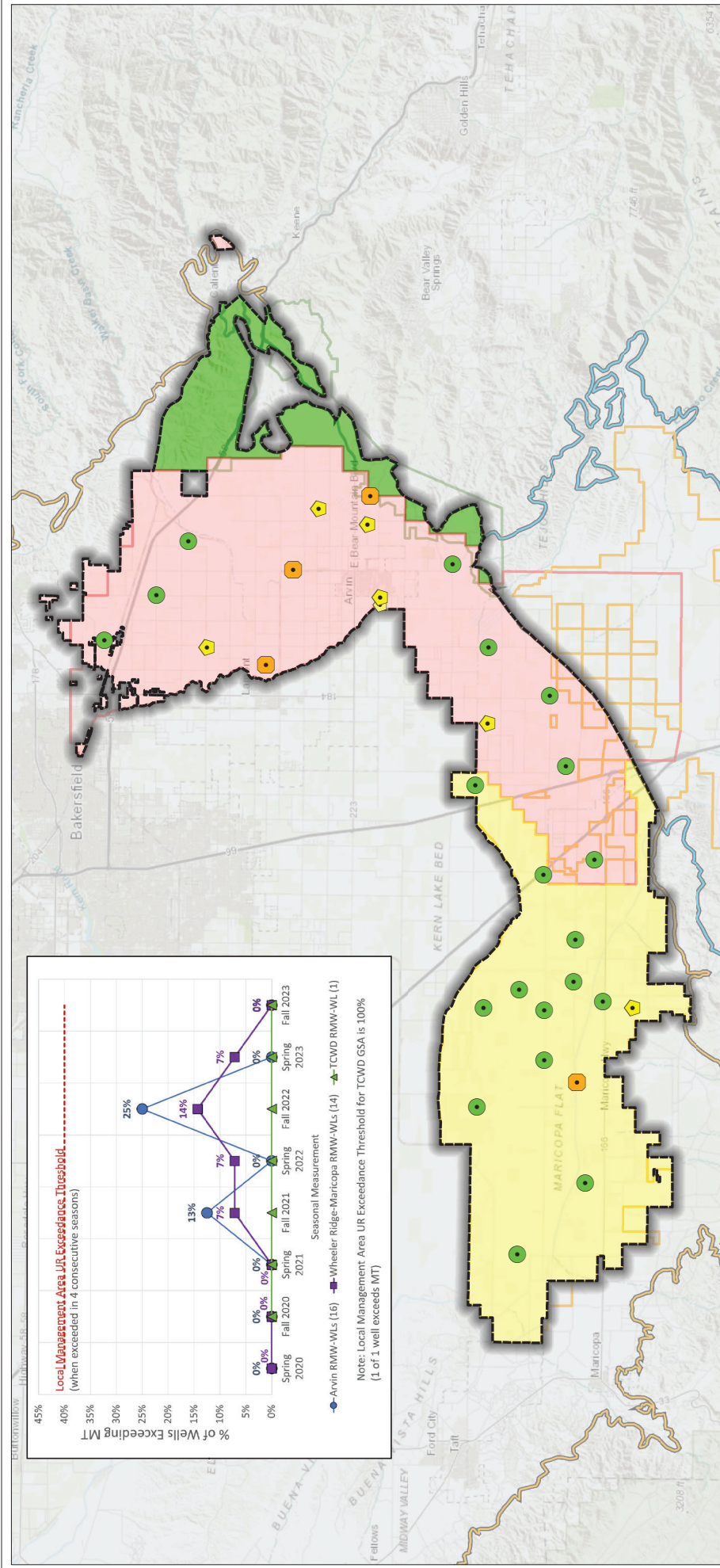
ACTION ITEMS (cont.)

GEI Consultants' Task Order. Mr. Muhar presented GEI Consultant's task order for the Subbasin 2024 Data Management System (DMS). Director Valpredo made a motion, seconded by Director Gallardo, to recommend GEI Consultant's task order for approval by the SOKR GSA boards. The motion passed 4-0-0.

ADJOURNMENT

Director Yurosek adjourned the South of Kern River Executive Committee meeting at 11:31 a.m.

Mark Valpredo, South of Kern River
Executive Committee Secretary



Legend

- Water Level Above MO (20 or 65%)
- Water Level between MO and MT but closer to MO (7 or 22%)
- Water Level between MO and MT but closer to MT (4 or 13%)
- South of Kern River Plan
- Arvin GSA
- Wheeler Ridge-Maricopa GSA
- Tejon-Castac Water District GSA
- WRMWSD Service Area
- AEWSD Service Area
- TCWD Service Area
- Groundwater Subbasin
- Kern County (DWR 5-022.14)
- White Wolf (DWR 5-022.18)

Representative Monitoring Well and Status as of December 2023

- Green Circle: Water Level Above MO (20 or 65%)
- Green Square: Water Level between MO and MT but closer to MO (7 or 22%)
- Orange Square: Water Level between MO and MT but closer to MT (4 or 13%)
- Green Circle: South of Kern River Plan
- Green Circle: Arvin GSA
- Green Circle: Wheeler Ridge-Maricopa GSA
- Green Circle: Tejon-Castac Water District GSA

Abbreviations

- AEWSD = Arvin-Edison Water Storage District
- DWR = California Department of Water Resources
- GSA = Groundwater Sustainability Agency
- MO = Measurable Objective
- MT = Minimum Threshold
- RMW = Representative Monitoring Well
- SGMA = Sustainable Groundwater Management Act
- SMC = Sustainable Management Criteria
- TCWD = Tejon-Castac Water District
- UR = Undesirable Result
- WRMWSD = Wheeler Ridge-Maricopa Water Storage District

Notes

- All locations are approximate.
- Undesirable Results are deemed to occur if groundwater levels in 40% or more RMWs are below their respective MT for four consecutive biannual measurements (Spring and Fall) in any management area.

Sources

- Basemap is ESRI's ArcGIS Online world topographic map, obtained 4 January 2024.
- GSA boundaries obtained from SGMA GSA Map Viewer portal, accessed 6 May 2022.
- DWR groundwater basins are based on the boundaries defined in California's Groundwater Bulletin 118 - 2019 Update.

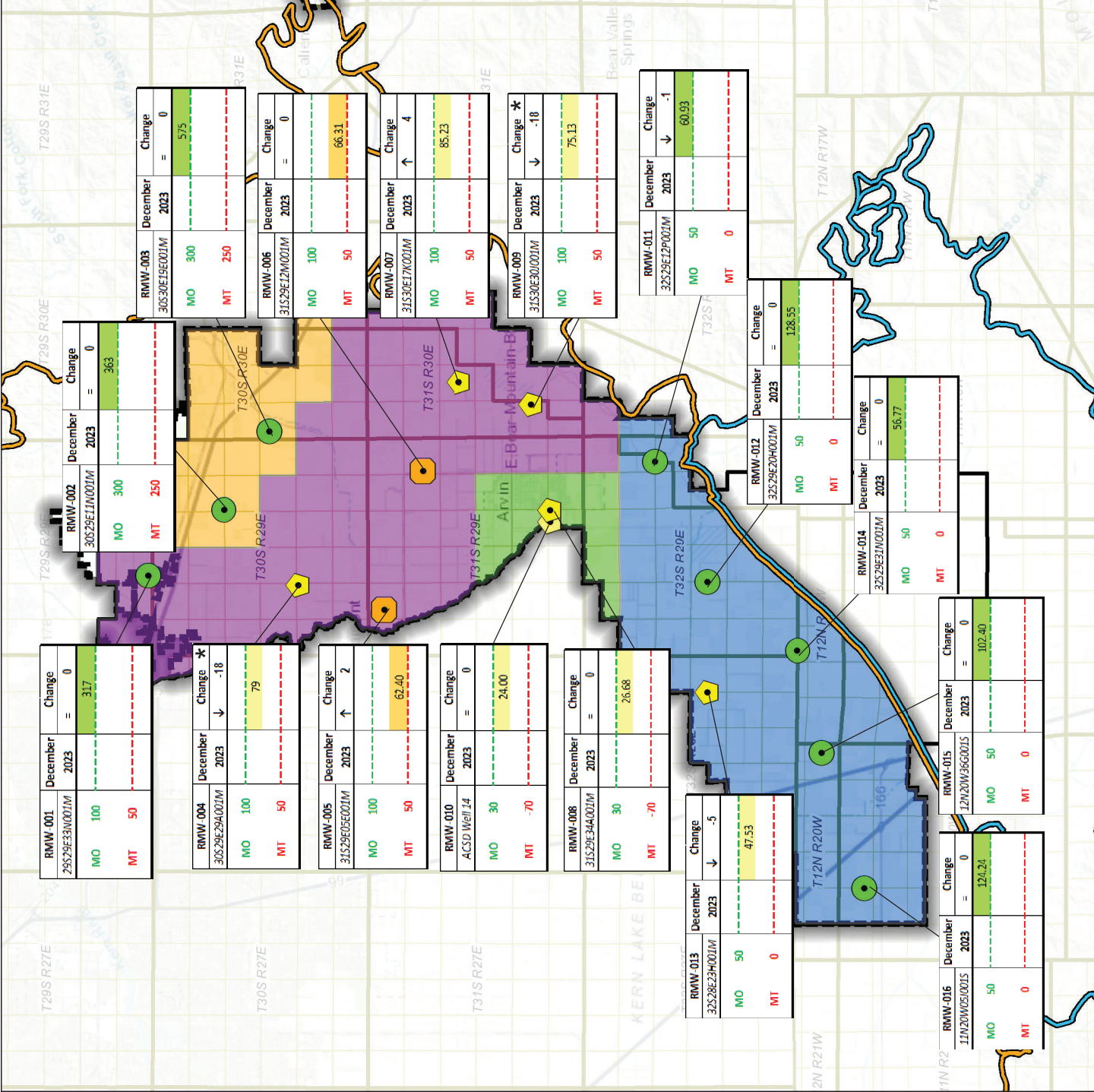
December 2023 Water Levels Relative to SMCs

South of Kern River GSP
Kern County, CA
December 2023
C20055.00

Figure 1

eki environment & water

INTERIM FIGURE - FOR INFORMATIONAL PURPOSES ONLY



Legend

Representative Monitoring Well and Status as of December 2023

- Water Level Above MO (8 or 50%)
- Water Level between MO and MT but closer to MO (6 or 38%)
- Water Level between MO and MT but closer to MT (2 or 13%)

Sustainability Criteria Zones

- ACSD
- Edison
- North Canal
- South Canal
- Arvin GSA
- Arvin-Edison Water Storage District

Groundwater Subbasin

- Kern County (DWR 5-022.14)
- White Wolf (DWR 5-022.18)

Abbreviations

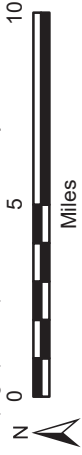
- ACSD = Arvin Community Services District
- DWR = California Department of Water Resources
- ft msl = feet above mean sea level
- GSA = Groundwater Sustainability Agency
- MO = Measurable Objective
- MT = Minimum Threshold
- RMW = Representative Monitoring Well
- SMC = Sustainable Management Criteria

Notes

1. All locations are approximate.
2. Groundwater elevations reported in units of ft msl.
3. All water levels collected during December 2023.
4. Arrow direction indicates water level change from previous month.
5. The RMW-004 and RMW-009 wells's December measurements are questionable and subject to change.

Sources

1. Basemap is ESRI's ArcGIS Online world topographic map, obtained 3 January 2024.



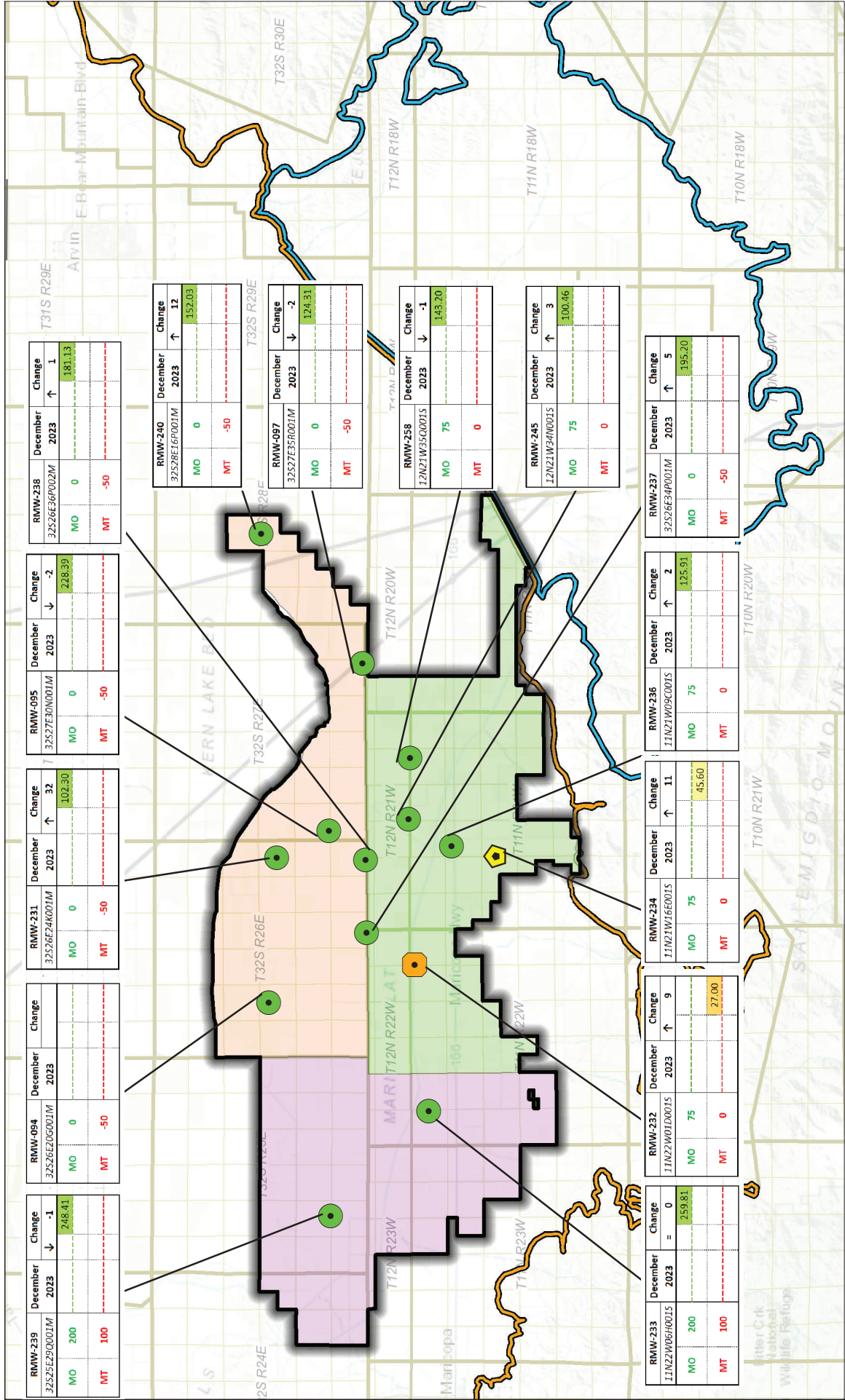
Groundwater Levels Relative to SMCs December 2023

Arvin GSA
Arvin-Edison Water Storage District
Kern County, California
December 2023
B60064.10



Figure 2

INTERIM FIGURE - FOR INFORMATIONAL PURPOSES ONLY



RMW-239	December 2023	Change
32525E290001M	200	-1
MO	0	248.41
MT	100	-

RMW-094	December 2023	Change
32526E200001M	0	-
MO	0	-
MT	-50	-

RMW-231	December 2023	Change
32526E240001M	0	32
MO	0	102.30
MT	-50	-

RMW-095	December 2023	Change
32527E300001M	0	-2
MO	0	228.39
MT	-50	-

RMW-238	December 2023	Change
32526E360002M	0	1
MO	0	181.13
MT	-50	-

RMW-240	December 2023	Change
32528E160001M	0	12
MO	0	152.03
MT	-50	-

RMW-097	December 2023	Change
32527E350001M	0	-2
MO	0	124.31
MT	-50	-

RMW-258	December 2023	Change
12N21W350001S	75	-1
MO	75	143.20
MT	0	-

RMW-245	December 2023	Change
12N21W340001S	75	3
MO	75	100.46
MT	0	-

RMW-237	December 2023	Change
32526E340001M	0	5
MO	0	195.20
MT	-50	-

RMW-236	December 2023	Change
11N21W090001S	75	2
MO	75	125.91
MT	0	-

RMW-234	December 2023	Change
11N21W160001S	75	11
MO	75	45.60
MT	0	-

RMW-232	December 2023	Change
11N22W010001S	75	9
MO	75	27.00
MT	0	-

RMW-233	December 2023	Change
11N22W060001S	200	0
MO	200	259.81
MT	100	-

Legend

Groundwater Subbasin

- Kern County (DWR 5-022.14)
- White Wolf (DWR 5-022.18)

Sustainability Criteria Zones

- Northeast
- Southeast
- West

Representative Monitoring Well and Status as of December 2023

- Water Level Above MO (12 or 86%)
- Water Level Between MO and MT but closer to MO (1 or 7%)
- Water Level Between MO and MT but closer to MT (1 or 7%)

Abbreviations

- DWR = California Department of Water Resources
- ft msl = feet above mean sea level
- GSA = Groundwater Sustainability Agency
- MO = Measurable Objective
- MT = Minimum Threshold
- SMC = Sustainable Management Criteria

Notes

- All locations are approximate.
- Groundwater elevations reported in units of ft msl.
- All water levels collected during December 2023.
- Arrow direction indicates water level change from previous month.
- The water level for the RMW-094 well was not measured in December 2023 due to the road being undrivable.

Sources

- Basemap is ESRI's ArcGIS Online world topographic map, obtained 4 January 2024.

Groundwater Levels Relative to SMCs
December 2023

Wheeler Ridge-Mariocopa GSA

South of Kern River
Kern County, California
December 2023
C20055.00

eki environment & water

Figure 3

Legend

Representative Monitoring Well and Status as of December 2023

- Water Level Above MO (8 or 50%)
- Water Level between MO and MT but closer to MO (6 or 37%)
- Water Level between MO and MT but closer to MT (2 or 13%)
- + District Recovery Well
- AEWSD Spreading Basin
- Arvin GSA
- Arvin-Edison Water Storage District
- Groundwater Subbasin
- Kern County (DWR 5-022.14)
- White Wolf (DWR 5-022.18)

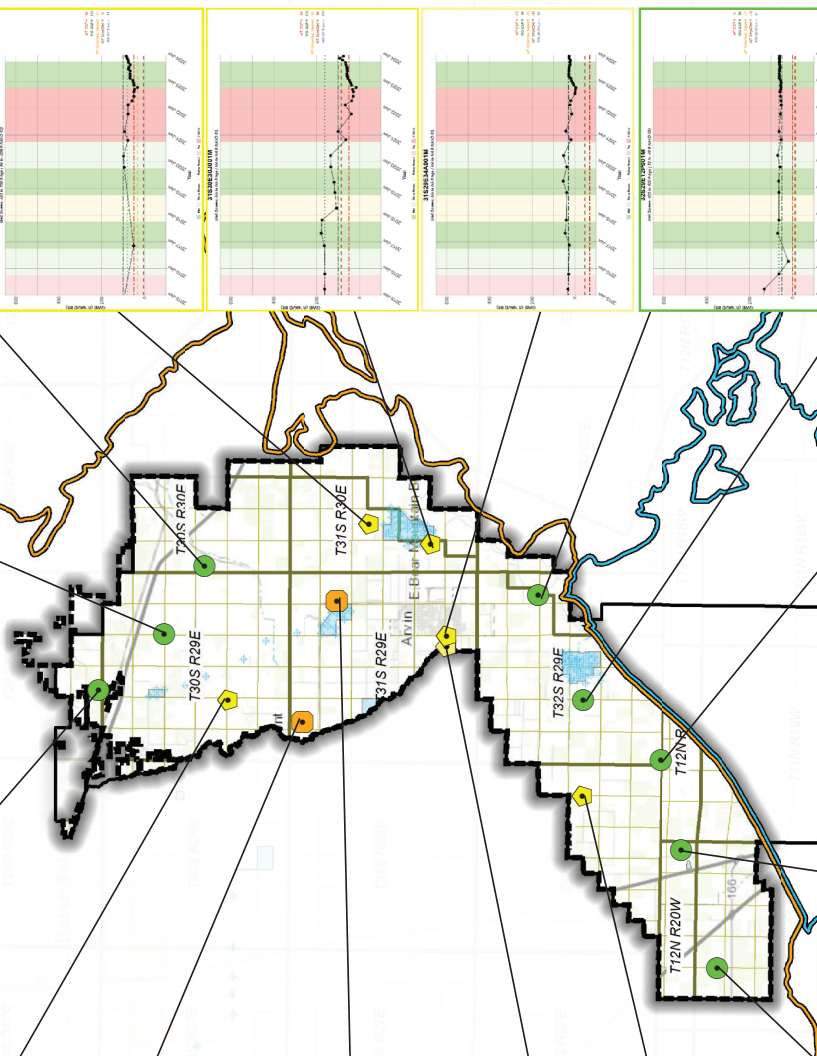
- Abbreviations**
- AEWSD = Arvin-Edison Water Storage District
 - DWR = California Department of Water Resources
 - ft msl = feet above mean sea level
 - GWE = groundwater elevation
 - MO = measurable objective
 - MT = minimum threshold
 - RMW = Representative Monitoring Well

Notes

1. All locations are approximate.
2. Groundwater elevations are in feet mean sea level.
3. Undesirable Results are deemed to occur if groundwater levels in 40% or more (7 or more) RMWs are below their respective MT for 4 consecutive bi-annual measurements (Spring and Fall).
4. All RMW status based on December 2023 measurements.

Sources

1. Basemap is ESRI's ArcGIS Online world topographic map, obtained 21 December 2023.
2. Water level information obtained from AEWSD.



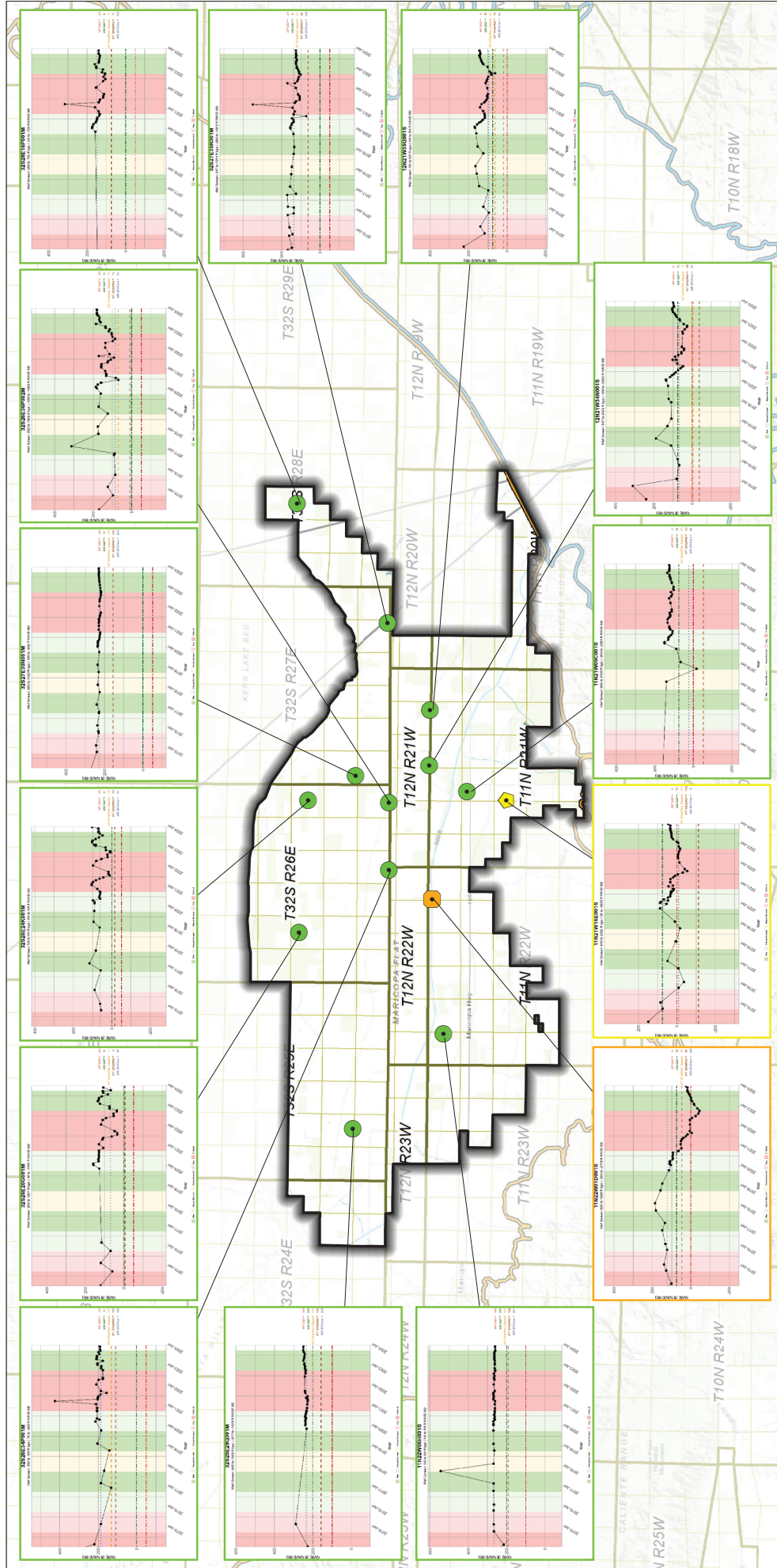
DRAFT
Hydrographs in Representative Monitoring Wells
(Jan 2016 - December 2023)

Arvin-Edison Water Storage District
Kern County, CA
December 2023
C20055.01



Figure 4

INTERIM FIGURE - FOR INFORMATIONAL PURPOSES ONLY



Legend

- Representative Monitoring Well and Status as of December 2023
 - Water Level Above MO (12 or 68%)
 - Water Level Between MO and MT but closer to MT (1 or 7%)
 - Water Level Between MO and MT but closer to MO (1 or 7%)
- Wheeler Ridge-Maricopa GSA
- Groundwater Subbasin
- Kern County (DWR 5-022.14)
- White Wolf (DWR 5-022.18)

- Notes**
1. All locations are approximate.
 2. Groundwater elevations are in feet mean sea level.
 3. Undesirable Results are deemed to occur if groundwater levels in 40% or more (6 or more) RMWs are below their respective MT for 4 consecutive bi-annual measurements (Spring and Fall).
 4. All RMW status based on December 2023 measurements.

Abbreviations

- DWR = California Department of Water Resources
- ft msl = feet above mean sea level
- GSA = Groundwater Sustainability Agency
- MO = Measurable Objective
- MT = Minimum Threshold
- RMW = Representative Monitoring Well
- WRMWS = Wheeler Ridge-Maricopa Water Storage District

Hydrographs in Representative Monitoring Wells (January 2015 - December 2023)

Wheeler Ridge-Maricopa Water Storage District
 Kern County, CA
 December 2023
 B70103.01



Figure 5
 INTERIM FIGURE - FOR INFORMATIONAL PURPOSES ONLY

- Sources**
1. Basemap is ESRI's ArcGIS Online world topographic map, obtained 4 January 2024.
 2. Groundwater elevation data provided by WRMWS.

Kern County Subbasin Minimum Thresholds for Chronic Lowering of Groundwater Exceedance Policy

INTRODUCTION

An exceedance policy is hereby developed to provide protocols and guidelines for groundwater sustainability agencies (GSAs) in the Kern County Subbasin (Subbasin) to investigate exceedance of minimum thresholds (MTs) at Representative Monitoring Wells (RMW) following the collection of RMW monitoring data. This policy is developed in conjunction with the Subbasin Well Mitigation Program which identifies mitigation strategies for vulnerable communities as detailed in the Groundwater Sustainability Plan(s).¹ The foundational elements of a successful exceedance policy are described below.

PURPOSE

While it is likely a single or isolated exceedance of a MT will not, by itself, cause an Undesirable Result², such an exceedance may be indicative of future or trending exceedances which could result in Subbasin-wide Undesirable Results for chronic lowering of groundwater.

Each Groundwater Sustainability Agency (GSA) within the Subbasin is responsible for monitoring groundwater conditions, complying with GSP requirements, and coordinating with other agencies and entities (cities, small systems, etc.) within their respective GSA boundaries. However, all GSAs must also work cooperatively to avoid Subbasin-wide Undesirable Results and maintain SGMA compliance. As part of this coordination, all GSAs within the Subbasin compile an annual report and submit that report to the Department of Water Resources (DWR) each year on April 1. Information that reflects compliance with or exceedance of MTs will be included in each annual report, if present. The exceedance policy below supplements the Subbasin's annual reporting efforts to further document actionable progress towards avoiding future MT exceedances.

POLICY

As prescribed in the Kern Subbasin Monitoring Network & Protocols, groundwater levels must be measured by GSAs at all RMWs for both Spring (January 15th to March 30th) and Fall (September 15th to November 15th) monitoring events, at a minimum (some GSAs take more frequent readings, however only these two events are utilized for the MT exceedance and Undesirable Results calculation). After each official Spring and Fall groundwater monitoring event, GSAs are required to report their results to the Subbasin data management system (DMS) to be aggregated and included in the Subbasin's annual report. When an individual well MT has been exceeded, a notification is sent to GSAs in the Subbasin through the DMS including the location and date of the MT exceedance.

Within 60 days of submittal of an MT exceedance to the Subbasin DMS, any GSA/management area with an MT exceedance at a RMW shall complete the following steps:

Step 1: Identification of Initial Exceedance and Investigation of the RMW Area

¹ The Subbasin Well Mitigation Program is described under [insert Appendix #] of the Kern County Subbasin Groundwater Sustainability Plan(s).

² Undesirable Results are defined in the Kern County Groundwater Sustainability Plan(s) as [insert definition and/or page reference].

- A. During the initial investigation after an MT exceedance, the GSA will gather information to evaluate whether the issue is associated with one RMW or is systemic to a larger geographic area. The investigation will evaluate various conditions surrounding the RMW that may be contributing to the MT exceedance which may include information in response to the following questions:
- Are water levels declining in nearby wells? If so, investigate the cause and identify how large of an area is affected.
 - Is the area close to any new well(s)?
 - Is the exceedance coincident with area-wide drought conditions?
 - i. Evaluate the exceedance in reference to the GSA water budget.
 - Are there other activities that could be affecting groundwater conditions in the area?
 - Are there existing projects in the area that are in the process of being implemented?
- B. During the investigation process, the GSA will assess whether the exceedance is caused by drought³, operations in an adjacent GSA, and/or activities not related to SGMA. If applicable, the GSA with the MT exceedance is encouraged to coordinate with neighboring GSA(s) to determine the cause of the exceedance and develop collaborative corrective actions.
- C. Individual GSAs will provide a copy of the exceedance report to the Subbasin coordination committee (coordination committee). Within 60 days of receipt, the coordination committee will review the exceedance report to determine if the MT exceedance is contributing to localized undesirable conditions due to SGMA-related activities.

Step 2: Confer with Subbasin coordination committee

The coordination committee may make recommendations to the GSA(s) to consider implementing projects, management actions, or other actions as applicable to prevent a continued exceedance in adherence to the Subbasin Well Mitigation Program.

³ "Chronic lowering of groundwater levels indicating a significant and unreasonable depletion of supply if continued over the planning and implementation horizon. Overdraft during a period of drought is not sufficient to establish a chronic lowering of groundwater levels if extractions and groundwater recharge are managed as necessary to ensure that reductions in groundwater levels or storage during a period of drought are offset by increases in groundwater levels or storage during other periods." (Source: Water Code Section 10721 (x)(1)).