



TEJON-CASTAC  
**WATER**  
DISTRICT



## South of Kern River Executive Committee Regular Meeting

Thursday, August 10, 2023

10:00 a.m. to 11:30 a.m.

Meeting Information Posted:

[www.sokrgsp.com](http://www.sokrgsp.com)

<http://www.aewsd.org> \* <http://www.wrmwsd.com>

<http://www.tejoncastacwd.com> \* <https://www.arvincsd.com>

In Person: Arvin-Edison Water Storage District Headquarters  
20401 E. Bear Mountain Blvd. Arvin, CA 93203

Via Remote (**Microsoft Teams**): <https://www.microsoft.com/microsoft-teams/join-a-meeting>

**Click here to join the meeting**

Meeting Number: **289 619 843 830**

Meeting Password: **ko5K35**

Phone: **1.213.437.9052**

Phone Meeting Number (access code): **276 512 496#**

**NOTICE:** Members of the public interested in participating by teleconference may do so using the call-in information above or by following [this link](#). Please note that this teleconference option is provided as a courtesy and at the participant's own risk. The Committee cannot guarantee that there will be no loss of connectivity or other technological obstacle to full participation through teleconferencing. By participating in this way, participants confirm that they understand this risk and that the Committee is not obliged to delay any portion of the meeting due to such technological obstacles and thus that teleconference participants may be unable to participate.

1. CALL TO ORDER
2. ROLL CALL
3. PLEDGE OF ALLEGIANCE
4. APPROVAL OF THE AGENDA
5. APPROVAL OF JULY 20, 2023 MEETING MINUTES
6. PUBLIC COMMENT
7. REPORT ITEMS
  - a. GSP Manager Report (*Muhar*)
    - i. Basin Coordination Committee
  - b. Technical Consultant Report (*EKI*)
    - i. Technical Working Group (TWG) Update
    - ii. SGMA Monitoring Network performance and sustainable management criteria (SMC) compliance
  - c. Finance Report (*Nicholas*)

d. California Aqueduct Subsidence Program (CASP) update (*Nicholas*)

e. Management Area updates (*Muhar, Nicholas, Martin, Barraza*)

8. CLOSED SESSION

a. Potential Litigation (Government Code §54956.9(d)(2), (e)(1); 1 item).

9. ACTION ITEMS

a. Present and consider TWG recommended subbasin-wide groundwater level SMC definitions

10. CORRESPONDENCE

11. ADJOURNMENT

**MINUTES OF THE MEETING OF THE  
SOUTH OF KERN RIVER EXECUTIVE COMMITTEE  
July 20, 2023**

Chair Yurosek called to order the monthly meeting at 10:00 a.m., with a quorum and attendance by:

*Executive Committee Directors*

Derek Yurosek – Arvin-Edison Water Storage District (AEWSD; Arvin GSA) (in person)

Mark Valpredo – Tejon-Castac Water District (TCWD; Tejon-Castac GSA) (in person)

Michael Blaine – Wheeler Ridge-Mariposa Water Storage District (WRMWSO; Wheeler Ridge-Maricopa GSA) (in person)

Rafael Gallardo – Arvin Community Services District (ACSD) (in person)

*District Staff*

Raul Barraza – ACSD (in person)

Jeevan Muhar – AEWSD (in person)

Sheridan Nicholas – WRMWSO (in person)

Participants recited the Pledge of Allegiance.

**APPROVAL OF JUNE 14, 2023 MEETING MINUTES**

Director Valpredo moved to approve the June 14, 2023 South of Kern River (SOKR) Executive Committee meeting minutes. Director Blaine seconded. The motion passed unanimously.

**PUBLIC COMMENT**

There were no public comments.

**REPORT ITEMS**

**GSP Manager Report**

*Basin Coordination Committee*

Mr. Muhar reported that the Coordination Committee continues to meet with participation by the Subbasin's Technical Working Group (TWG), to discuss potential responses to the deficiencies identified by the Department of Water Resources (DWR).

**Technical Consultant Report**

*Technical Working Group (TWG) Update*

EKI reported on the subbasin-wide technical work efforts the TWG has been conducting over the past month to address DWR-identified GSP deficiencies, including developing recommended subbasin-wide minimum threshold (MT) approaches.

SGMA Monitoring Network performance and sustainable management criteria (SMCs) compliance

EKI reported on the status of June 2023 groundwater levels in comparison to SMCs.

**Attorney Report**

Ms. Gantenbein had nothing to report.

**Finance Report**

Mr. Nicholas reported on the SOKR expenses. AEWSD and WRMWSD are paying a higher share of the costs than TCWD due to additional costs to address White Lands issues. WRMWSD will continue billing as necessary.

**California Aqueduct Subsidence Program (CASP) update**

Mr. Nicolas had nothing to report regarding correspondence with CASP.

**Management Area Updates**

Mr. Muhar reported that AEWSD has increased recharge efforts by continuing to direct surplus surface supplies to recharge and using new facilities for that purpose.

Mr. Nicholas reported that WRMWSD concluded a successful Proposition 218 process instituting a Groundwater Service Charge, but the WRMWSD Board elected to defer setting the 2023 groundwater extraction charge rate pending resolution of the AEWSD and WRMWSD boundary overlap issue.

Mr. Barraza reported that ACSD is conducting a search for potential grant opportunities to fund the development of potential recharge properties in conjunction with AEWSD.

**ACTION ITEMS**

**Consider TWG recommended subbasin-wide groundwater level SMCs definitions**

EKI reported that the TWG was considering three options for groundwater level SMC. At Chair Yurosek's request, and hearing no objections, presentation of the options was deferred until after Closed Session.

**CORRESPONDENCE**

There was no correspondence.

**CLOSED SESSION**

Conference with Legal Counsel pursuant to Government Code §54956.9(d)(2), (e)(1) (potential litigation; 1 item). There was no action to report out of closed session.

### **ACTION ITEMS (cont'd)**

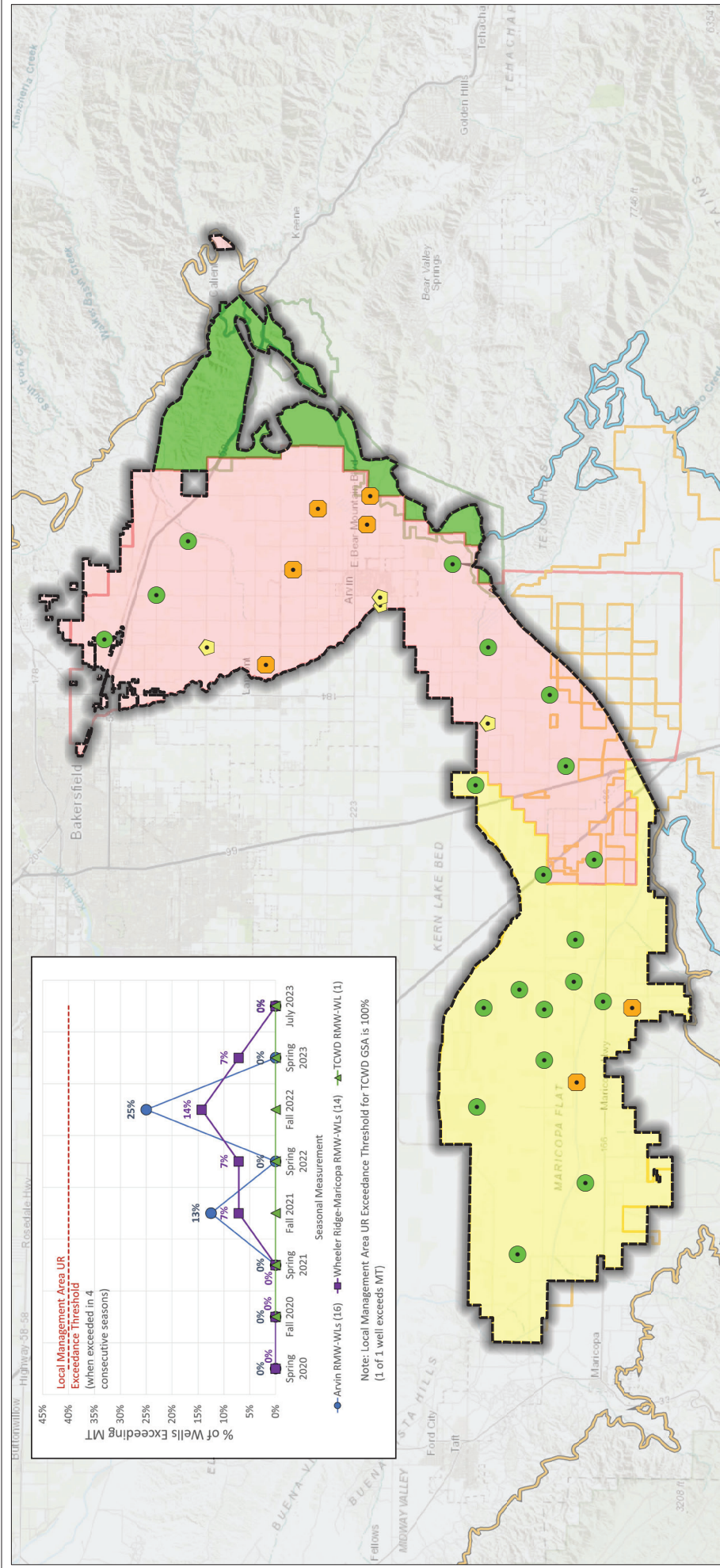
EKI presented the top three recommended groundwater level SMC options, including options for MTs, Measurable Objective (MOs), and a new Undesirable Results (URs) definition. The Directors discussed but did not make a formal recommendation on preferred option.

### **ADJOURNMENT**

Chair Yurosek adjourned the South of Kern River Executive Committee meeting at 11:33 a.m.

---

Mark Valpredo, South of Kern River  
Executive Committee Secretary



**Legend**

- Water Level Above MO (20 or 64%)
- Water Level between MO and MT but closer to MO (4 or 13%)
- Water Level between MO and MT but closer to MT (7 or 23%)
- South of Kern River Plan
- Arvin GSA
- Wheeler Ridge-Maricopa GSA
- Tejon-Castac Water District GSA
- WRMWSD Service
- AEWSD Service
- TCWD Service
- Groundwater Subbasin
- Kern County (DWR 5-022.14)
- White Wolf (DWR 5-022.18)

**Representative Monitoring Well and Status as of July 2023**

- Water Level Above MO (20 or 64%)
- Water Level between MO and MT but closer to MO (4 or 13%)
- Water Level between MO and MT but closer to MT (7 or 23%)
- South of Kern River Plan
- Arvin GSA
- Wheeler Ridge-Maricopa GSA
- Tejon-Castac Water District GSA
- WRMWSD Service
- AEWSD Service
- TCWD Service
- Groundwater Subbasin
- Kern County (DWR 5-022.14)
- White Wolf (DWR 5-022.18)

**Abbreviations**

- AEWSD = Arvin-Edison Water Storage District
- DWR = California Department of Water Resources
- GSA = Groundwater Sustainability Agency
- MO = Measurable Objective
- MT = Minimum Threshold
- RMW = Representative Monitoring Well
- SGMA = Sustainable Groundwater Management Act
- SMC = Sustainable Management Criteria
- TCWD = Tejon-Castac Water District
- UR = Undesirable Result
- WRMWSD = Wheeler Ridge-Maricopa Water Storage District

**Notes**

- All locations are approximate.
- Undesirable Results are deemed to occur if groundwater levels in 40% or more RMWs are below their respective MT for four consecutive biannual measurements (Spring and Fall) in any management area.

**Sources**

- Basemap is ESRI's ArcGIS Online world topographic map, obtained 4 August 2023.
- GSA boundaries obtained from SGMA GSA Map Viewer portal, accessed 6 May 2022.
- DWR groundwater basins are based on the boundaries defined in California's Groundwater Bulletin 118 - 2019 Update.

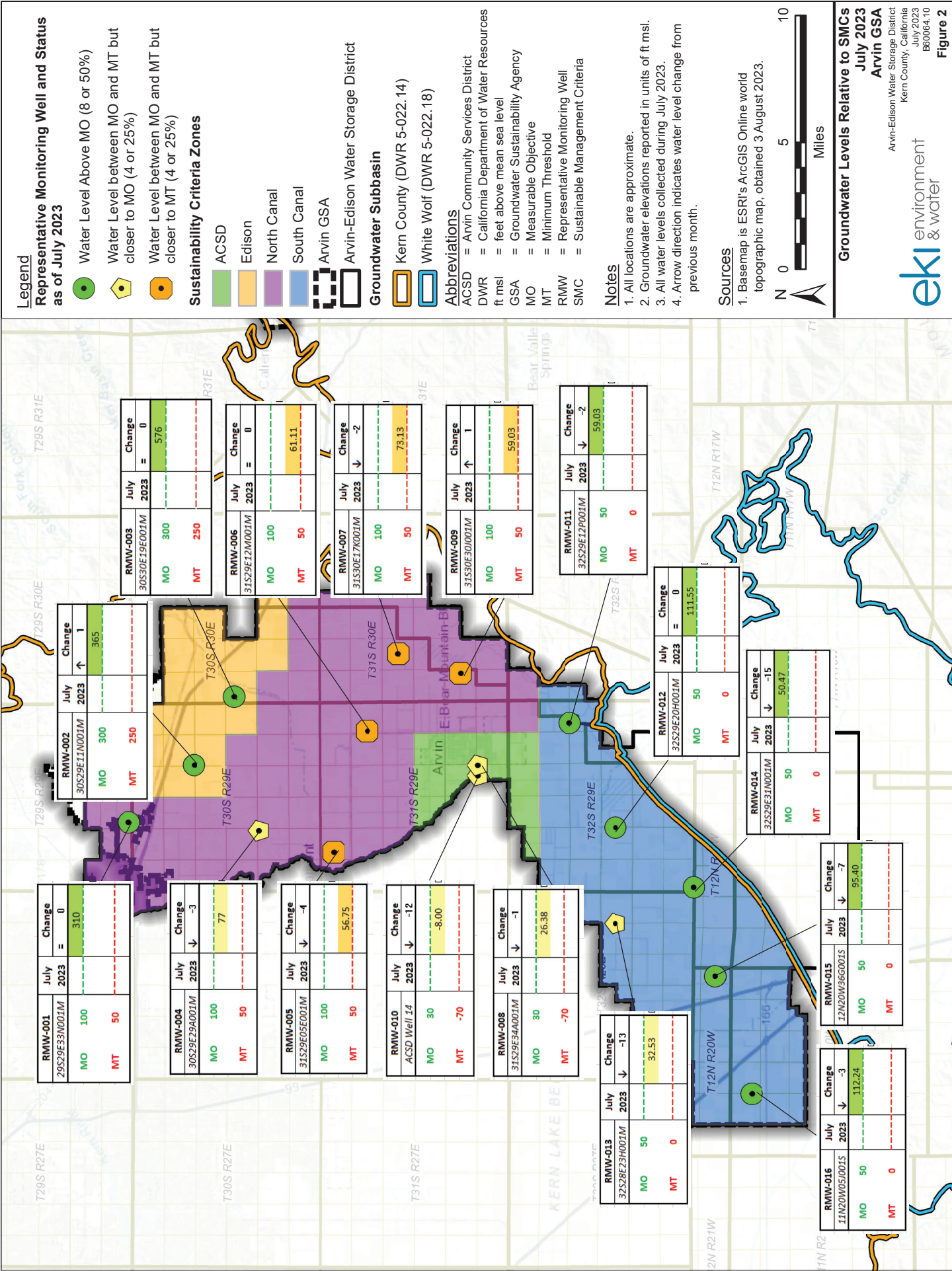
**July 2023 Water Levels Relative to SMCs**

South of Kern River GSP  
Kern County, CA  
July 2023  
C20055.00

**Figure 1**

eki environment & water

INTERIM FIGURE - FOR INFORMATIONAL PURPOSES ONLY



**Legend**

**Representative Monitoring Well and Status as of July 2023**

- Water Level Above MO (8 or 50%)
- Water Level between MO and MT but closer to MO (4 or 25%)
- Water Level between MO and MT but closer to MT (4 or 25%)

**Sustainability Criteria Zones**

- ACSD
- Edison
- North Canal
- South Canal
- Arvin GSA
- Arvin-Edison Water Storage District

**Groundwater Subbasin**

- Kern County (DWR 5-022.14)
- White Wolf (DWR 5-022.18)

**Abbreviations**

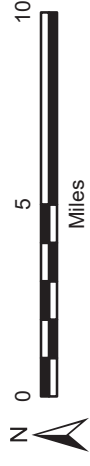
- ACSD = Arvin Community Services District
- DWR = California Department of Water Resources
- ft msl = feet above mean sea level
- GSA = Groundwater Sustainability Agency
- MO = Measurable Objective
- MT = Minimum Threshold
- RMW = Representative Monitoring Well
- SMC = Sustainable Management Criteria

**Notes**

1. All locations are approximate.
2. Groundwater elevations reported in units of ft msl.
3. All water levels collected during July 2023.
4. Arrow direction indicates water level change from previous month.

**Sources**

1. Basemap is ESRI's ArcGIS Online world topographic map, obtained 3 August 2023.



**Groundwater Levels Relative to SMCs**

July 2023  
Arvin GSA

Arvin-Edison Water Storage District  
Kern County, California  
July 2023  
B60064.10



Figure 2

INTERIM FIGURE - FOR INFORMATIONAL PURPOSES ONLY

RMW-001	July 2023	Change
29S29E33N001M	310	= 0
MO	100	
MT	50	

RMW-004	July 2023	Change
30S29E39A001M	-3	↓
MO	100	
MT	50	

RMW-005	July 2023	Change
31S29E05E001M	-4	↓
MO	100	
MT	50	

RMW-010	July 2023	Change
ACSD Well 14	-12	↓
MO	30	
MT	-70	

RMW-008	July 2023	Change
31S29E34A001M	-1	↓
MO	30	
MT	-70	

RMW-013	July 2023	Change
32S28E23H001M	-13	↓
MO	50	
MT	0	

RMW-016	July 2023	Change
11N20W05I001S	-3	↓
MO	50	
MT	0	

RMW-015	July 2023	Change
12N20W36G001S	-7	↓
MO	50	
MT	0	

RMW-002	July 2023	Change
30S29E11N001M	365	↑
MO	300	
MT	250	

RMW-003	July 2023	Change
30S30E19E001M	576	= 0
MO	300	
MT	250	

RMW-006	July 2023	Change
31S29E12M001M	61.11	= 0
MO	100	
MT	50	

RMW-007	July 2023	Change
31S30E17K001M	-2	↓
MO	100	
MT	50	

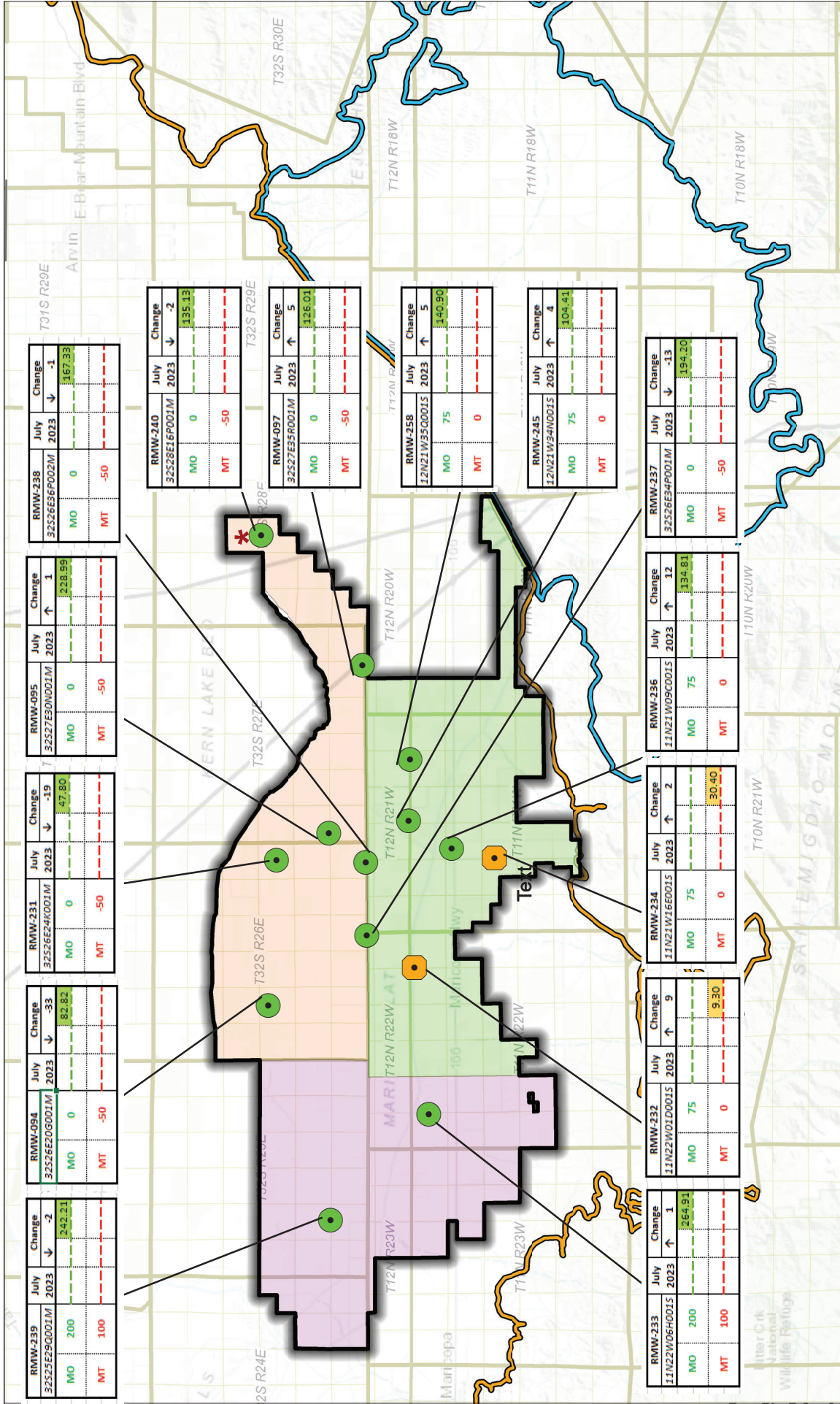
RMW-009	July 2023	Change
31S30E30I001M	1	↑
MO	100	
MT	50	

RMW-011	July 2023	Change
32S29E12P001M	-2	↓
MO	50	
MT	0	

RMW-012	July 2023	Change
32S29E20H001M	111.55	= 0
MO	50	
MT	0	

RMW-014	July 2023	Change
32S29E31N001M	-15	↓
MO	50	
MT	0	

RMW-015	July 2023	Change
12N20W36G001S	-7	↓
MO	50	
MT	0	



RMW-239	July 2023	Change
3252E290001M	242.21	-2
MO	200	
MT	100	

RMW-094	July 2023	Change
3252E200001M	82.82	-33
MO	0	
MT	-50	

RMW-231	July 2023	Change
3252E240001M	47.80	-19
MO	0	
MT	-50	

RMW-095	July 2023	Change
32527E30001M	228.99	1
MO	0	
MT	-50	

RMW-238	July 2023	Change
3252E6E9002M	167.33	-1
MO	0	
MT	-50	

RMW-240	July 2023	Change
32528E16001M	135.13	-2
MO	0	
MT	-50	

RMW-097	July 2023	Change
32527E35001M	136.01	5
MO	0	
MT	-50	

RMW-258	July 2023	Change
12N21W350001S	140.90	5
MO	75	
MT	0	

RMW-245	July 2023	Change
12N21W340001S	104.41	4
MO	75	
MT	0	

RMW-237	July 2023	Change
3252E6E4F001M	134.20	-13
MO	0	
MT	-50	

RMW-234	July 2023	Change
11N21W160001S	30.40	2
MO	75	
MT	0	

RMW-236	July 2023	Change
11N21W090001S	134.81	12
MO	75	
MT	0	

RMW-232	July 2023	Change
11N22W010001S	264.91	9
MO	200	
MT	100	

RMW-233	July 2023	Change
11N22W060001S	264.91	1
MO	200	
MT	100	

**Legend**

**Groundwater Subbasin**

- Kern County (DWR 5-022.14)
- White Wolf (DWR 5-022.18)

**Sustainability Criteria Zones**

- Northeast
- Southeast
- West
- Wheeler Ridge-Maricopa GSA

**Notes**

- All locations are approximate.
- Groundwater elevations reported in units of ft msl.
- All water levels collected during July 2023.
- Arrow direction indicates water level change from previous month.
- \* Denotes water level subject to revision

**Sources**

- Basemap is ESRI's ArcGIS Online world topographic map, obtained 4 August 2023.

**Representative Monitoring Well and Status as of July 2023**

- Water Level Above MO (12 or 86%)
- Water Level Between MO and MT but closer to MT (2 or 14%)

**Abbreviations**

DWR = California Department of Water Resources

ft msl = feet above mean sea level

GSA = Groundwater Sustainability Agency

MO = Measurable Objective

MT = Minimum Threshold

SMC = Sustainable Management Criteria

**Groundwater Levels Relative to SMCs July 2023**

Wheeler Ridge-Maricopa GSA

South of Kern River  
Kern County, California  
July 2023  
C20055.00

**eki environment & water**

Figure 3



**Legend**

**Representative Monitoring Well and Status as of July 2023**

- Water Level Above MO (8 or 50%)
- Water Level between MO and MT but closer to MO (4 or 25%)
- Water Level between MO and MT but closer to MT (4 or 25%)

**District Recovery Well**

- AEWSD Spreading Basin
- Arvin GSA
- Arvin-Edison Water Storage District
- Groundwater Subbasin**
- Kern County (DWR 5-022.14)
- White Wolf (DWR 5-022.18)

**Abbreviations**

- AEWSD = Arvin-Edison Water Storage District
- DWR = California Department of Water Resources
- ft msl = feet above mean sea level
- GWE = groundwater elevation
- MO = measurable objective
- MT = minimum threshold
- RMW = Representative Monitoring Well

**Notes**

1. All locations are approximate.
2. Groundwater elevations are in feet mean sea level.
3. Undesirable Results are deemed to occur if groundwater levels in 40% or more (7 or more) RMWs are below their respective MT for 4 consecutive bi-annual measurements (Spring and Fall).
4. All RMW status based on July 2023 measurements.

**SOURCES**

1. Basemap is ESRI's ArcGIS Online world topographic map, obtained 3 August 2023.
2. Water level information obtained from AEWSD.



**DRAFT**

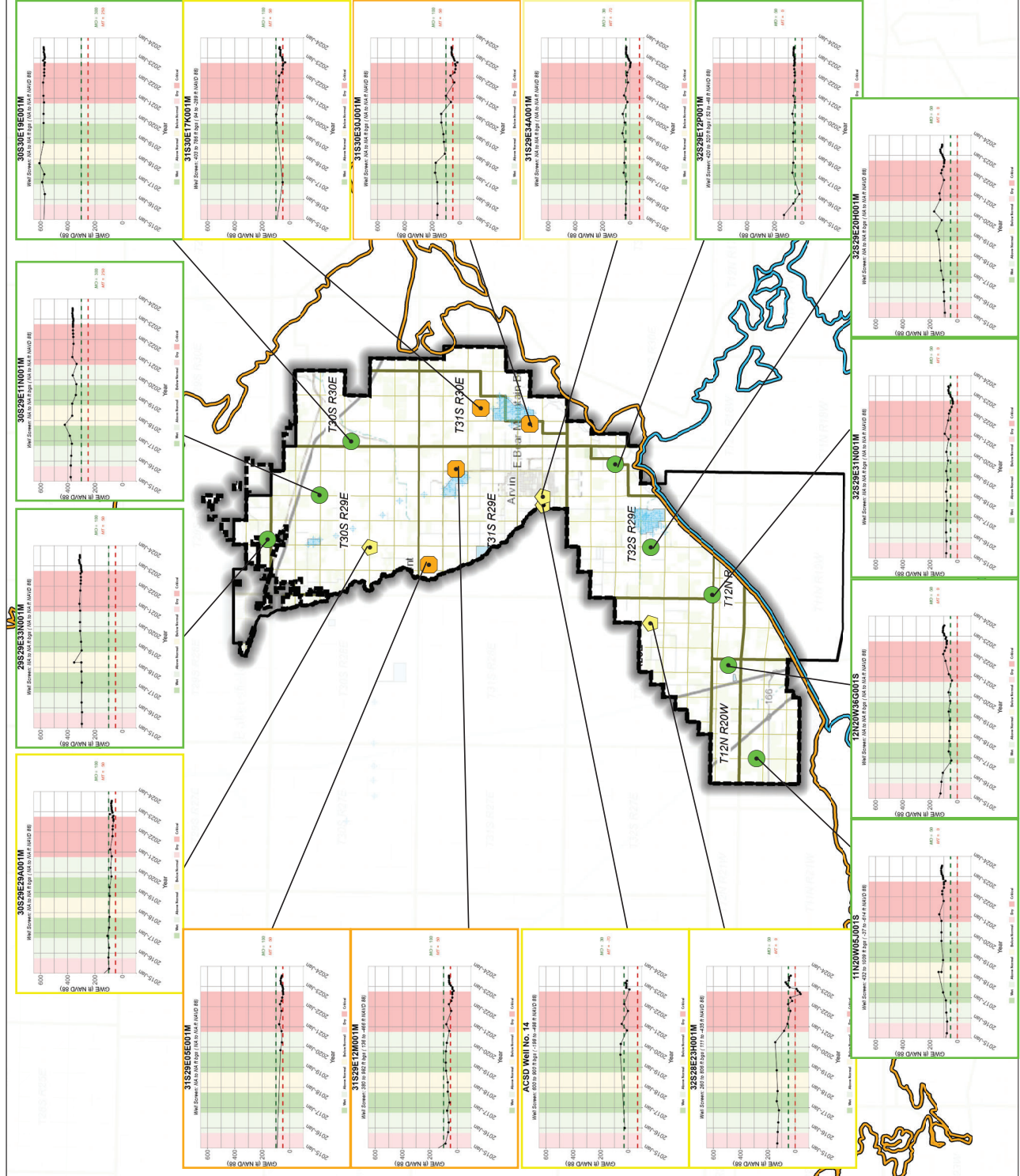
**Hydrographs in Representative Monitoring Wells  
(Jan 2015 - July 2023)**

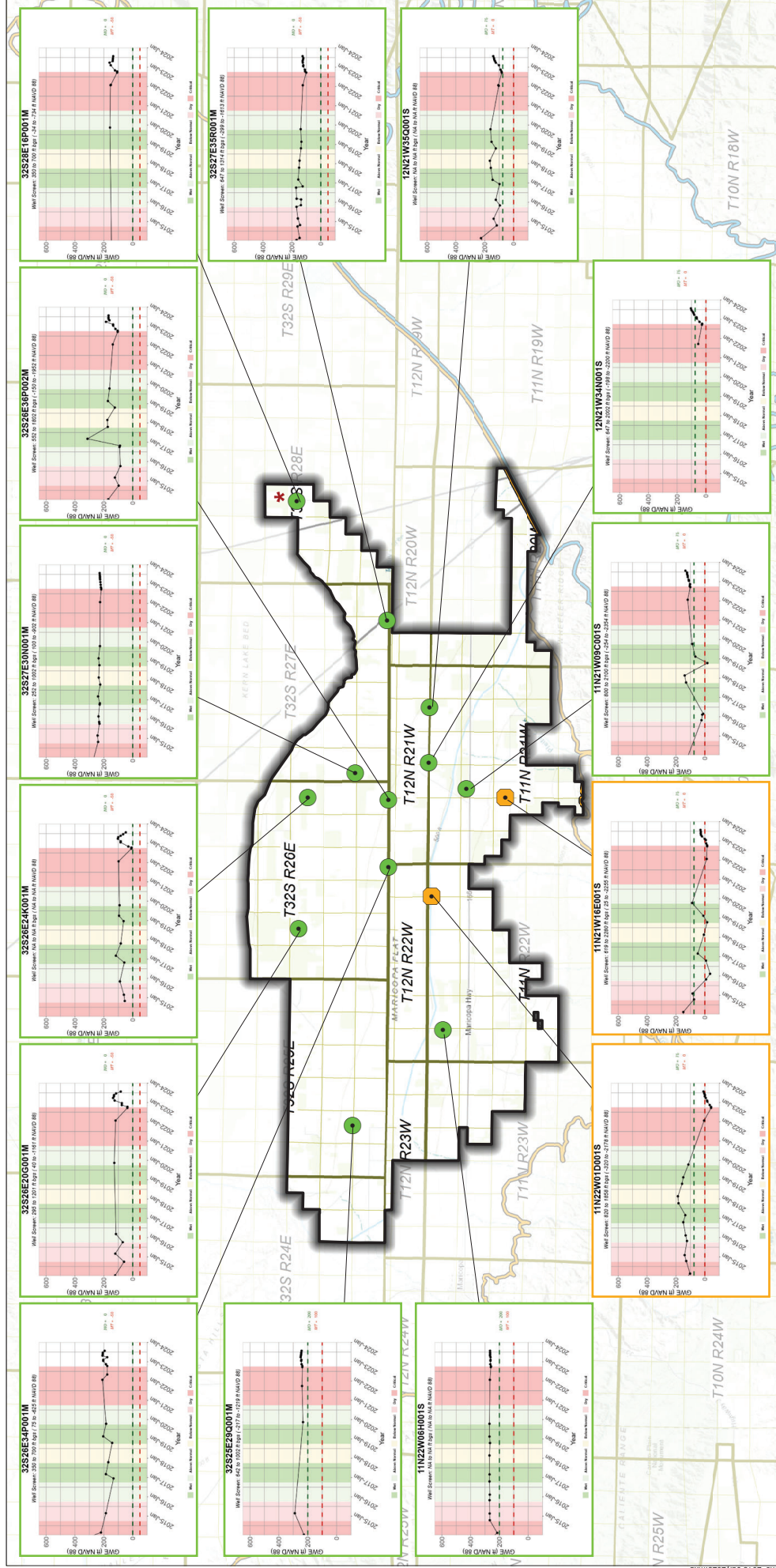
Arvin-Edison Water Storage District  
Kern County, CA  
July 2023  
C20055.01



**Figure 4**

INTERIM FIGURE - FOR INFORMATIONAL PURPOSES ONLY





**Legend**

- Water Level Above MO (12 or 66%)
- Water Level Between MO and MT but Closer to MT (2 or 14%)
- Wheeler Ridge-Maricopa GSA
- Groundwater Subbasin
- Kern County (DWR 5-022.14)
- White Wolf (DWR 5-022.18)

**Notes**

- All locations are approximate.
- Groundwater elevations are in feet mean sea level.
- Undesirable Results are deemed to occur if groundwater levels in 40% or more (6 or more) RMWs are below their respective MT for 4 consecutive bi-annual measurements (Spring and Fall).
- All RMW status based on July 2023 measurements.
- \* Denotes July water level subject to revision

**Abbreviations**

- DWR = California Department of Water Resources
- ft amsl = feet above mean sea level
- GSA = Groundwater Sustainability Agency
- MO = Measurable Objective
- MT = Minimum Threshold
- RMW = Representative Monitoring Well
- WRMWS = Wheeler Ridge-Maricopa Water Storage District

**Sources**

- Basemap is ESRI's ArcGIS Online world topographic map, obtained 4 August 2023.
- Groundwater elevation data provided by WRMWS.

**Representative Monitoring Well and Status as of July 2023**

Water Level Above MO (12 or 66%)

Water Level Between MO and MT but Closer to MT (2 or 14%)

Wheeler Ridge-Maricopa GSA

Groundwater Subbasin

Kern County (DWR 5-022.14)

White Wolf (DWR 5-022.18)

**Hydrographs in Representative Monitoring Wells (January 2015 - July 2023)**

Wheeler Ridge-Maricopa Water Storage District  
Kern County, CA  
July 2023  
B70103.01  
**Figure 5**

**Figure 5**

INTERIM FIGURE - FOR INFORMATIONAL PURPOSES ONLY

**eki environment & water**

**Hydrographs in Representative Monitoring Wells (January 2015 - July 2023)**

Wheeler Ridge-Maricopa Water Storage District  
Kern County, CA  
July 2023  
B70103.01  
**Figure 5**

**Notes**

- All locations are approximate.
- Groundwater elevations are in feet mean sea level.
- Undesirable Results are deemed to occur if groundwater levels in 40% or more (6 or more) RMWs are below their respective MT for 4 consecutive bi-annual measurements (Spring and Fall).
- All RMW status based on July 2023 measurements.
- \* Denotes July water level subject to revision

**Abbreviations**

- DWR = California Department of Water Resources
- ft amsl = feet above mean sea level
- GSA = Groundwater Sustainability Agency
- MO = Measurable Objective
- MT = Minimum Threshold
- RMW = Representative Monitoring Well
- WRMWS = Wheeler Ridge-Maricopa Water Storage District

**Sources**

- Basemap is ESRI's ArcGIS Online world topographic map, obtained 4 August 2023.
- Groundwater elevation data provided by WRMWS.